



NEOPRENE



SPEARFISHING

WETSUITS

Two piece wetsuits made in single lined neoprene with an elastic camouflaged lining. The neoprene rubber is certified for the absence of any chemical materials which can damage the environment or human health such as phthalates and latex. It also features great resistance to compression and an excellent elastic return.

The pants and jacket have a preformed design and the small number of panels used to assemble the wetsuit allow for less sewing hence greatly increasing the overall elasticity of the wetsuit, especially in the armpit area.

The jacket features a reinforcement on the chest for greater protection during charge and reinforcements on the elbows. The pants have similar reinforcements on the knees.

SIZING TABLE

2 PCS WETSUITS MAN (CM)

CARBON ROCK - EXTREME CAMO

| | HEIGHT | WEIGHT | NECK | TORAX | WAIST | HIPS | CROTCH NECK | BICEPS | FOREARM | WRIST | ARM | THIGH | CALF | ANKLE | ANKLE INSEAM |
|-----------|---------|--------|------|-------|-------|------|----------------|--------|---------|-------|-----|-------|------|-------|-----------------|
| T1 | 160/167 | 55/65 | 39 | 86 | 72 | 81 | 61 | 27 | 24 | 16 | 49 | 53 | 33 | 19 | 66 |
| T2 | 167/175 | 65/75 | 40 | 92 | 78 | 87 | 63 | 29 | 25 | 17 | 50 | 54 | 34 | 20 | 69 |
| T3 | 175/182 | 75/83 | 41 | 98 | 85 | 93 | 65 | 32 | 26 | 18 | 53 | 56 | 35 | 22 | 71 |
| T4 | 182/190 | 83/90 | 42 | 105 | 91 | 100 | 70 | 35 | 29 | 19 | 56 | 59 | 36 | 23 | 73 |
| T5 | 190/200 | 90/110 | 43 | 112 | 100 | 107 | 74 | 38 | 32 | 20 | 57 | 60 | 39 | 24 | 76 |

CARBON ROCK

The exclusive design of this wetsuit features a background in carbon fiber color with spots of 3D camouflaged sea bottom. This solution breaks the image of the diver increasing the camouflaged effect. CARBON ROCK features the new "Easy Lock" button system, designed by C4. These locks have been specifically designed to lock the jacket in position in the crotch area minimizing obstruction and allowing the diver to unlock the jacket with just one hand. CARBON ROCK is available in three thicknesses: 3.0mm, 5.0mm and 6.5mm. Jacket and Pants are sold separately in five sizes.



CHEST PROTECTION

| JACKET | 0WC4CRJ |
|--------|---------------|
| 3 mm | 0WC4CRJ3S1-S5 |
| 5 mm | 0WC4CRJ5S1-S5 |
| 6,5 mm | 0WC4CRJ6S1-S5 |
| 7,5 mm | 0WC4CRJ7S1-S5 |

EXCLUSIVE
TRIGGERING
SYSTEMPROTECTION
ON THE KNEES



PROTECTION ON
THE ELBOWS



HOOK TO HANG
THE PANTS

| PANT | 0WC4CRP |
|--------|---------------|
| 3 mm | 0WC4CRP3S1-S5 |
| 5 mm | 0WC4CRP5S1-S5 |
| 6,5 mm | 0WC4CRP6S1-S5 |



EXTREME CAMO

The 3D photographic camouflage is an exclusive design of C4 and it reproduces the typical bottom of the sea with inserts in green olive color which break the image.

EXTREME CAMO comes in three thicknesses: 3.0mm, 5.0mm and 6.5mm. Pants and jackets are sold separately in five sizes.



JACKET AND PANTS ARE
SOLD SEPARATELY IN 5
SIZES

| JACKET | 0WC4EXJ |
|--------|----------------|
| 3 mm | 0WC4EXJ3S1-S5 |
| 5 mm | 0WC4EXJ5S1-S5 |
| 6,5 mm | 0WC4EXJ65S1-S5 |



PHOTOGRAPHIC 3D
CAMOUFLAGE
COLOR

CHEST REINFORCEMENT
AND ELBOW
PROTECTIONS

ANTI-WEAR
PROTECTIONS
ON THE
KNEES

| PANT | |
|--------|---------------|
| 3 mm | 0WC4EXP3S1-S5 |
| 5 mm | 0WC4EXP5S1-S5 |
| 6,5 mm | 0WC4EXP6S1-S5 |



ZERO GLOVES

- Watertight neoprene gloves thanks to the innovative "Acqualock system".

- Available in 2mm, 3.5mm and 5mm to optimise different thermal-protective needs.

- Ergonomic gloves with palm reinforced in anti-abrasion material and featuring additional protection on the fingertips of the first 3 fingers of the left glove, which are more subject to wear during spearfishing.

- High thermal power

- Excellent fit.



PROTECTION ON
THE FINGERTIPS
OF THE FIRST 3
FINGERS OF THE
LEFT GLOVE



INNOVATIVE "ACQUALOCK
SYSTEM"

| 0GLC4ZD | |
|---------|------------------|
| 2 mm | 0GLC4ZD 20 XS-XL |
| 3,5 mm | 0GLC4ZD 35 XS-XL |
| 5 mm | 0GLC4ZD 50 XS-XL |



ZERO PLUS

NEOPRENE SOCKS

The anatomy and fashion of the ZERO PLUS neoprene socks are the same of the ZERO model. Compared to the ZERO, however the materials used are different.

The ZERO PLUS is in fact mainly made of single-lined neoprene, smooth externally and with a super elastic lining inside, without the presence of seams. The use of these materials makes these neoprene socks extremely elastic and with a high thermal capacity.

The lining used for the front part of the fingers, the sole and the heel is reinforced and anti-abrasion.

The anatomy is differentiated between the right and left foot.

Available only in 5mm thickness and six sizes, from size XS to XL.

| | EU | US |
|------------|-------|-----------|
| XS | 36/37 | 4.5 / 5.5 |
| S | 38/39 | 6 / 7 |
| S/M | 40/41 | 7.5 / 8.5 |
| M | 42/43 | 9.5 / 10 |
| L | 44/45 | 11 / 11.5 |
| XL | 46/47 | 12.5 / 13 |

| | 0SOC4ZP5S |
|------|------------------|
| 5 mm | 0SOC4ZP5SXS-XL |



POWER-GRIP ON THE HEEL WITH NO SEWING



ANTI-CUT AND ABRASION PROOF PANEL



LEFT | RIGHT



NEOPRENE SOCKS ZERO

The design of these neoprene socks has been developed down to the smallest detail. We have used **different materials for each panel** making **these neoprene socks** the most comfortable and resistant on the market. The panel of the instep is made with elastic lining, the panel on the fingers is warm and anti-cut, the one on the sole and on the heel is highly resistant to abrasion without any undesirable sewings. Zero features a left and a right.

| | EU | US |
|------------|-------|-----------|
| XS | 36/37 | 4.5/ 5.5 |
| S | 38/39 | 6 / 7 |
| S/M | 40/41 | 7.5 / 8.5 |
| M | 42/43 | 9.5 / 10 |
| L | 44/45 | 11 / 11.5 |
| XL | 46/47 | 12.5 / 13 |

| | 0SOC4Z |
|--------|-----------------|
| 1,5 mm | 0SOC4Z 15 XS-XL |
| 3 mm | 0SOC4Z 3 XS-XL |
| 5 mm | 0SOC4Z 5 XS-XL |



THREE
DIFFERENT
MATERIALS



ANTI-CUT AND
ABRASION PROOF
PANEL



POWER-GRIP ON
THE HEEL WITH
NO SEWING



RIGHT LEFT



2024

ENG



FLARE

FREEDIVING LINE



**FLARE**

FREEDIVING LINE

Flare is a line of products by C4 specifically designed for freediving.

The common feature of the products of this new line is a bright and luminescent colour.

The mix of black, silver and gold colours has been carefully designed to be pleasing to the eye and highly visible in the water.

The Flare line features: fins, masks, snorkels, wetsuits and swimsuits. The line also includes the new UP fin by Umberto Pelizzari.



TWO PIECES WETSUIT MAN

Two pieces wetsuits made in single lined neoprene: glide skin on the outside and elastic lining on the inside. These wetsuits are glued and only sewn on the inside thus resulting in a very elastic fit.

They are available in five sizes, in thicknesses 3 and 5mm in both the Sideral and Aurea models. Pants and jackets are sold separately.

| JACKET | 0WC4SIMJ |
|--------|----------------|
| 3 mm | 0WC4SIMJ3S1-S5 |
| 5 mm | 0WC4SIMJ5S1-S5 |



CARBON EFFECT
PRINTED



| PANT | 0WC4SIMP |
|------|----------------|
| 3 mm | 0WC4SIMP3S1-S5 |
| 5 mm | 0WC4SIMP5S1-S5 |

JACKET AND PANTS ARE
SOLD SEPARATELY IN 5 SIZES

| JACKET | 0WC4AUMJ |
|--------|-----------------|
| 3 mm | 0WC4AUMJ3 S1-S5 |
| 5 mm | 0WC4AUMJ5 S1-S5 |

ERGONOMIC
TAILORED CUT

ELASTIC INNER
LINING

NEW

| PANT | 0WC4AUWP |
|------|-----------------|
| 3 mm | 0WC4AUWP3 S1-S5 |
| 5 mm | 0WC4AUWP5 S1-S5 |

TWO PIECES WETSUIT WOMAN

Two pieces wetsuits made in single lined neoprene: glide skin on the outside and elastic lining on the inside. These wetsuits are glued and only sewn on the inside thus resulting in a very elastic fit.

They are available in five sizes, in thicknesses 3 and 5mm in both the Sideral and Aurea models.

Pants and jackets are sold separately.

| JACKET | |
|--------|----------------|
| 3 mm | 0WC4SIWJ3S1-S5 |
| 5 mm | 0WC4SIWJ5S1-S5 |



CARBON EFFECT
PRINTED

| PANT | |
|------|----------------|
| 3 mm | 0WC4SIWP3S1-S5 |
| 5 mm | 0WC4SIWP5S1-S5 |



JACKET AND PANTS ARE
SOLD SEPARATELY IN 5 SIZES

| JACKET | 0WC4AUWJ |
|--------|-----------------|
| 3 mm | 0WC4AUWJ3 S1-S5 |
| 5 mm | 0WC4AUWJ5 S1-S5 |

ERGONOMIC
TAILORED CUT

ELASTIC INNER
LINING

NEW

| PANT | 0WC4AUWP |
|------|-----------------|
| 3 mm | 0WC4AUWP3 S1-S5 |
| 5 mm | 0WC4AUWP5 S1-S5 |

FREEDIVING WETSUITS

Wetsuits specifically designed for freediving made with glide skin neoprene on the outside and elastic single lined neoprene lining on the inside. The neoprene rubber is certified for the absence of any chemical materials which can damage the environment or human health such as phthalates and latex. It also features great resistance to compression and an excellent elastic return.

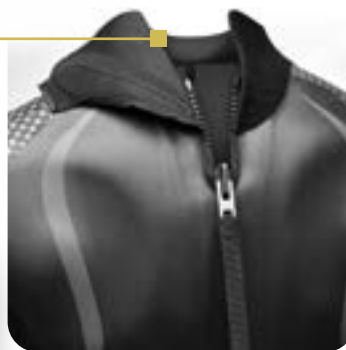
ERGONOMIC
TAILORED CUT



ELASTIC INNER
LINING



| | 0WC4SIM |
|--------|-----------------|
| 2 mm | 0WC4SIM2 S0-S5 |
| 3,5 mm | 0WC4SIM35 S1-S5 |



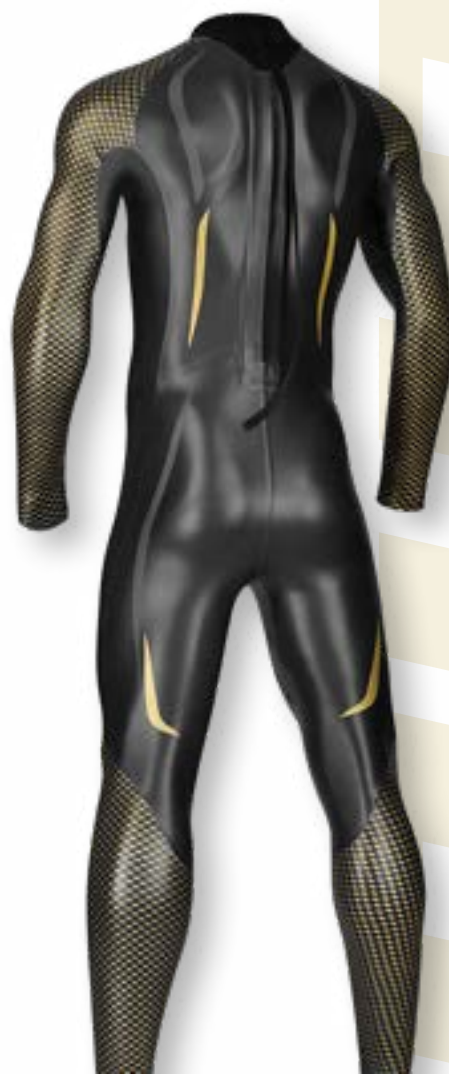
VELCRO
CLOSURE ON
THE NECK



SLEEVES CAN BE CUT AT THE
DESIRED LENGTH

NEW

PRINTED CARBON
FIBER PATTERN



| 0WC4AUM | |
|---------|----------------|
| 2 mm | 0WC4AUM2 S0-S5 |

SIDERAL SINGLE PIECE

Single piece wetsuits in 2mm and 3.5mm neoprene available in six sizes. Sideral have been designed with a minimum number of panels so as to reduce the sewing and therefore increasing their comfort and elasticity. The inner lining is extremely elastic and the wetsuit is glued externally and sewn internally. The sleeves feature several bar tacking sewings so that they can be cut a desired length.

PRINTED CARBON
FIBER PATTERN



| | 0WC4SIW |
|--------|-----------------|
| 2 mm | 0WC4SIW2 S0-S5 |
| 3,5 mm | 0WC4SIW35 S1-S5 |



VELCRO
CLOSURE
ON THE
NECK



SLEEVES CAN BE CUT AT THE
DESIRED LENGTH

NEW

ELASTIC INNER
LINING



| 0WC4AUW | |
|---------|----------------|
| 2 mm | 0WC4AUW2 S0-S5 |

SINGLE PIECE WETSUIT DYN-UP

Developed in cooperation with Umberto Pelizzari, this one-piece glide skin neoprene wetsuit specific for dynamic freediving in the pool is made with panels in different neoprene thicknesses:

- 2mm in the central parts (back, chest and legs up to the knee) to guarantee the necessary warmth even during training

- 0.5mm pre-compressed neoprene in the remaining parts (neck, arms, legs below the knee and hips) to obtain maximum elasticity and optimise the free-diver's weight

ERGONOMIC
TAILORED CUT



STAMPA EFFETTO
CARBONIO

| OWC4DYM2 | |
|----------|----------------|
| 2 mm | OWC4DYM2 S0-S5 |



VELCRO
CLOSURE
ON THE
NECK



SLEEVES CAN BE CUT AT THE
DESIRED LENGTH

| | |
|------|----------------|
| | 0WC4DYW2 |
| 2 mm | 0WC4DYW2 S0-S5 |

The design is pre-shaped and made with a reduced number of panels, thus increasing the comfort and elasticity of the wetsuits.

The internal lining is made of highly elastic material and the wetsuit is glued and taped internally. The sleeves feature a series of bar-tacks, near the cuffs, that allow to cut the sleeves to the desired lengths, preventing unstitching problems.

Available in 6 sizes.

Also ideal for competitive use.



C4 WETSUITS NEOPRENE RUBBER IS CERTIFIED FOR THE ABSENCE OF SUBSTANCES CONSIDERED HARMFUL TO HUMANS AND THE ENVIRONMENT SUCH AS PHTHALATES AND LATEX.





NEW

SLEEVELESS FREEDIVING SPRING SUIT WOMAN

Swimsuit made in 2mm neoprene smooth skin on the outside and with an internal elastic lining.

It can be used as a swimming suit, in swimming pools or warm waters, or as an undersuit to be worn under freediving suits. This model is sleeveless.

Available in sizes 1 to 4.



| | |
|----------|--------------|
| 0WC4AUWU | |
| 2 mm | 0WC4AUWU 1-4 |

LONG SLEEVES FREEDIVING SPRING SUIT WOMAN

Swimsuit made in 2mm neoprene smooth skin on the outside and with an internal elastic lining.

It can be used as a swimming suit, in swimming pools or warm waters, or as an undersuit to be worn under freediving suits. This model features long sleeves.

Available in sizes 1 to 4.

NEW

| | |
|----------|--------------|
| 0WC4AUWS | |
| 2 mm | 0WC4AUWS 1-4 |



MB002 FINS

SIDERRAL

For the development of these fins we started from the design of the foot pocket. MB Fins feature the new 250 foot pocket, a direct derivation of the previous 300 model. Thanks to the use of a TPE 75 ShA polymer overmolded on a rigid sole, the 250 foot pocket transmits energy from the foot to the blade in the best possible way, resulting in highly efficient fins. The design of the geometries has allowed to use minimum thicknesses resulting in a reduction of the weight of the 250 footpocket in size 41/42 to just 250gr.

ANATOMY

The 3° pre-shaped anatomy of the 250 makes it particularly comfortable to wear. The reduced thicknesses fit the shape of the upper to the shape of the foot, without painful constraints.

PERFORMANCE

The connection between the foot pocket and the blade, thanks to the internal sole, is rigid and solid, and transmits the force to the blades efficiently. The assembly of the blade on the footpocket without side horns, already created by C4 in 2006, allows an elastic bending of the blade along its entire length.

MB BLADES

In MB fins, the major factor that increases performance is the new dedicated "Reverse Parabolic" lamination; a parabolic curvature which, instead of having the part with greater flexion at the top, it is near the foot. This dedicated lamination significantly changes the mechanical behaviour of the fin. The surface that generates the thrust is in fact greater than the surface that generates hydrodynamic resistance, thus producing greater elastic deformations and greater propulsion. There is such a big advantage that it is possible to use stiffer blades, therefore with greater performance, but using the same effort normally used with lighter blades.

Taking advantage of this feature we have raised the relative performance. A "+" has been added to the hardnesses. This is because, flexed in the hand, an MB 25+ is stiff and pushes as much as a standard 30 while weighing in the water like a 25. Restarts from the bottom, accelerations and speeds are thus higher.

NEW

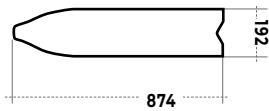
| |
|----------------------|
| 0PC4MB220 |
| 0PC4MB22020 36-44 SC |
| 0PC4MB22025 36-44 SC |

MB002 FINS

AUREA

MADE IN ITALY

| | |
|-----------------------|--------------------|
| MATERIAL | T 700 |
| BLADE HARDNESS | 20+, 25+, 30+ |
| WATER RAILS | ELASTIC-K10 NERO |
| FINS WEIGHT | tarting from 520 g |



UPON REQUEST, IT IS POSSIBLE TO
PAIR THESE BALDES WITH WHITE
COLOR 250 FOOTPOCKETS



SURFACE

matte surface finish

100% MADE IN ITALY

All C4 carbon fiber blades have always been entirely manufactured in our production plant in Italy. Starting this year, a new plastic injection department has been added at C4 plant and this is where the 250 footpockets and UP blades are manufactured.

WATER RAIL

MB fins feature new rounded section water rails that improve water containment on the blade and reduce water vortexes on the outer sides.

NEW


| |
|----------------------|
| 0PC4MB220 |
| 0PC4MB22020 36-44 AC |
| 0PC4MB22025 36-44 AC |

UP FLARE

MADE IN ITALY

Umberto Pelizzari



WATCH THE
VIDEO OF THE
PRODUCT
BEEN TESTED
IN THE WATER



The creation of the UP fins is the result of the collaboration between C4 and Umberto Pelizzari. These fins feature the new 250 footpockets and thermoplastic blades.

MATERIALS

The design and material of the blade are key features to obtain both softness, high elastic return and strong resistance to breaking. C4 has selected and tested many different polymers, selecting two blends, one for the Soft version and one for the Medium stiffness blades. These two solutions guarantee extremely high performance and resistance.

LOW WEIGHT

Today the C4 Umberto Pelizzari fins are by far the lightest on the market of long polymer blade fins. They weigh less than 1200 grams a pair.

NEW

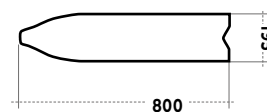
INTEGRATED WATER RAILS

A key element feature by the C4 Umberto Pelizzari fins is the fact that the water rails are over-moulded on the blades. The length (30.2* cm), the variable height (max 17.8* mm), the thickness (3.3* mm) and the material (thermo rubber) are another important feature of these blades.

100% MADE IN ITALY

All C4 carbon fiber blades have always been entirely manufactured in our production plant in Italy. Starting this year, a new plastic injection department has been added at C4 plant and this is where the 250 footpockets and UP blades are manufactured.

| | |
|----------------|-------------------------------------|
| MATERIAL | Thermoplastic |
| BLADE HARDNESS | SOFT - MEDIUM |
| WATER RAILS | CO-MOULDED IN ELASTIC THERMOPLASTIC |
| FINS WEIGHT | Starting from 670 g |



UPON REQUEST, IT IS POSSIBLE TO PAIR
THESE BLADES WITH WHITE COLOR
250 FOOTPOCKETS



PLASTIC BLADES FINs

FOOT POCKET 250

The UP fins feature the new 250

Thanks to the use of a TPE 75 ShA polymer overmolded on a rigid sole, the 250 foot pocket transmits energy from the foot to the blade in the best possible way, resulting in highly efficient fins.

The design of the geometries has allowed to use minimum thicknesses resulting in a reduction of the weight of the 250 footpocket in size 41/42 to just 250gr.

PERFORMANCE

The connection between the foot pocket and the blade, thanks to the internal sole, is rigid and solid, and transmits the force to the blades efficiently.

The assembly of the blade on the footpocket without side horns, already created by C4 in 2006, allows an elastic bending of the blade along its entire length.

MATERIAL

The polymer used for the 250 foot pocket is particularly elastic and allows for an easy and simple fit, thus improving comfort. The insole allows to have a stiff footpocket in the sole area but comfortable in the upper.

TRANSPORTATION

The 250 footpocket features a simple assembly of the blade thanks to a single sturdy M6 screw.

The assembly and disassembly of the blade is quick and simple and the overall dimensions are optimal in case of air travel.

UP FINS SIDERAL

NEW

0PC4UP - SC

| | |
|--------|------------------|
| MEDIUM | 0PC4UPM 36-44 SC |
| SOFT | 0PC4UPS 36-44 SC |

UP FINS AUREA

0PC4UP - AC

| | |
|--------|------------------|
| MEDIUM | 0PC4UPM 36-44 AC |
| SOFT | 0PC4UPS 36-44 AC |

NEW



STAINLESS STEEL MARSEILLE BUCKLE BELT



0BELTC4MAINSIL

SILVER

PLASTIC MARSEILLE BUCKLE BELT



SILVER

0BELTC4MANYSI

PLASTIC STANDARD BUCKLE BELT



0BELTC4NYSIL

SILVER

| | | | |
|-------------|--|--|--|
| MATERIAL | Silicone | | |
| DIMENSIONS | LENGHT: 1.45 m HEIGHT: 50 mm THICKNESS: 5.0 mm | LENGHT: 1.45 m HEIGHT: 50 mm THICKNESS: 4.0 mm | LENGHT: 1.40 m HEIGHT: 50 mm THICKNESS: 3.0 mm |
| MAX STRETCH | 570% | 670% | 770% |
| TEMPERATURE | -70°C to +200°C | | |

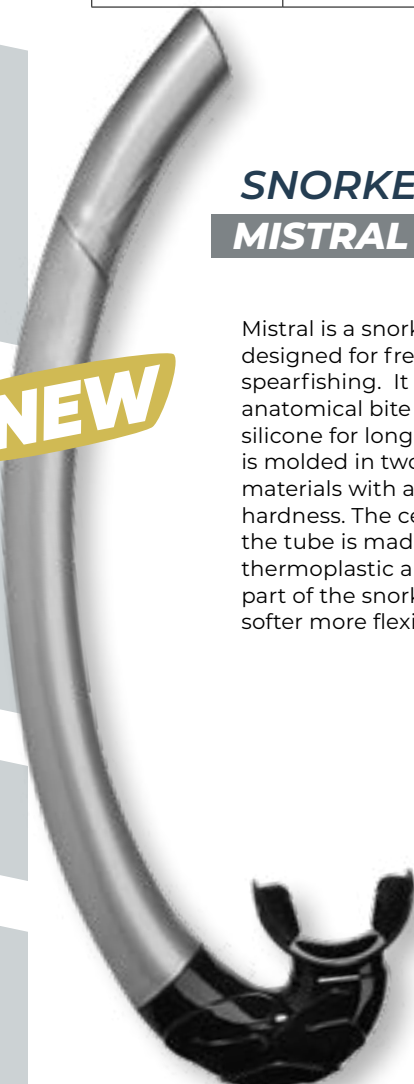
Silicone belts made by extrusion. Silicone is a thermoplastic material with technical features superior to rubber, which is generally used for freediving belts. This material is in fact much more elastic and resistant to wear, UV rays and salt water.

SNORKEL MISTRAL SOFT

0SNC4MISIS

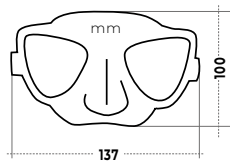
Mistral is a snorkel specifically designed for freediving and spearfishing. It features an anatomical bite in non-allergenic silicone for long use. The tube is molded in two different materials with a different hardness. The central part of the tube is made in semi-rigid thermoplastic and the upper part of the snorkel is made in a softer more flexible material.

NEW



0MAC4FASIL

FLARE



MISTRAL

0SNC4MIGO

MASK FALCON

FALCON has been conceived and designed specifically for deep freediving. The greatest feature of this mask is the low internal volume, obtained thanks to a design focused on containing space and a single piece structure. The silicone skirt features an inner gasket and a velvet finish that greatly increase its sealing capacity. The geometries are highly hydrodynamic and the mask travels through water without any tensions typical of deep dives and fast ascents. The field of vision has been optimised

| | FALCON |
|-----------------|--------------------|
| WIDTH | 137 mm |
| HEIGHT | 100 mm |
| INTERNAL VOLUME | 95 cm ³ |
| LENS AREA | 36 cm ² |

so has to be reduced in the unnecessary areas but allowing a great vision for spearfishing too. The buckles are attached to the mask skirt allowing for a very good and even fitting when wearing the mask.



0SNC4MIGO



0BELTC4MAINGO



0BELTC4MANYGO

TAVOLARA FREEDIVING BUOY

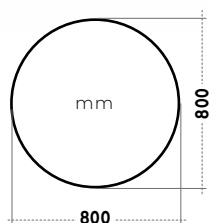
NEW

Training and pre-dive buoy specifically designed for freedivers.

It allows simultaneous use by multiple users, thanks to the four side handles. The accessories and the cable can be hooked to the external rings or inserted inside the buoy, in a dedicated space, accessible via a zipper.

The buoy has a double chamber and is made of 850gsm PVC with a thickness of 0.7mm. The Bravo valve has a maximum pressure of 8psi and the high-strength zipper is YKK.

Dimensions: Dia. 80cm Height 18cm



0BUOYC4ATA



THE BRAVO VALVE HAS A
MAXIMUM PRESSURE OF
8PSI

TAVOLARA IS
SUPPLIED IN A
SPECIAL BAG,
DOUBLE SIGNAL FLAG
AND A CONVENIENT
REPAIR KIT.



POLYETHYLENE SOCKS DYN

These socks are made in high modulus thermoplastic polyethylene. This waterproof fabric is among the toughest materials available to manufacture sporting clothing goods and it features a **certified level 5 anti-cut resistance**. It can be used in the pool, replacing the classic neoprene socks, with a reduced thickness and an increased feeling. It can also be used in warm or cold waters by wearing it over a 2-3mm neoprene sock. The socks are reinforced in the ankle area for a better grip with the fin footpocket. **They are available in five sizes, from size XS to size XL.**

| | EU | US |
|-----------|-------|-------------|
| XS | 36/37 | 4.5/ 5.5 |
| S | 38/39 | 6 / 7 |
| M | 40/42 | 7.5 / 9.5 |
| L | 43/44 | 10 / 11 |
| XL | 45/46 | 11.5 / 12.5 |

OSOC400
OSOC400XS-XL



REINFORCED IN
THE ANKLE AREA
FOR A BETTER
GRIP WITH THE
FIN FOOTPOCKET



ANTI SLIP



MADE IN HIGH
MODULUS
WATERPROOF
THERMOPLASTIC
POLYETHYLENE







SPEARGUNS +
SPEARGUN ACCESSORIES

ARBALETE

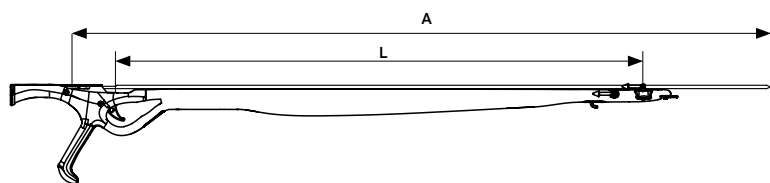
MR. CARBON 2.0

Mr. Carbon 2.0 is a monocoque speargun entirely manufactured in 100% high modulus carbon fiber. It is an hydrodynamic speargun featuring a rigid barrel for very sharp and stable shooting.

It is shaped as a cuttlefish bone with a reduced head and a higher volume towards the hand. This shape makes it well balanced and easy to handle in the water. It features an integrated shaft guide over the whole barrel.

The muzzle of Mr. Carbon 2.0 features an exclusive and unique design. It's entirely made in stainless steel and it has a very small size making it highly hydrodynamic.

The behindhand triggering mechanism is C4 "Auto-R" and the trigger are entirely manufactured in stain-less steel AISI 316. The releasing mechanism is made by punching and nailing which make it rust proof, resistant to wear and extremely solid.



FEATURED SLINGS

Double Sling C4 Grey Bull PRIMELINE grey color

MR CARBON 65 dia. 14mm x 21cm (from knot to knot)
 MR CARBON 75 dia. 14mm x 24 cm (from knot to knot)
 MR CARBON 85 dia. 14mm x 28 cm (from knot to knot)
 MR CARBON 95 dia. 14mm x 31cm (from knot to knot)
 MR CARBON 105 dia. 14mm x 34cm (from knot to knot)

| | L | A |
|-------------------|---------|---------|
| MR CARBON 2.0 65 | 650 mm | 1050 mm |
| MR CARBON 2.0 75 | 750 mm | 1150 mm |
| MR CARBON 2.0 85 | 850 m | 1250 mm |
| MR CARBON 2.0 95 | 950 mm | 1350 mm |
| MR CARBON 2.0 105 | 1050 mm | 1450 mm |

STANDARD SET UP

| MR CARBON 2.0 | 17/4 ph stainless steel shaft | C4 "Primeline" single sling |
|-----------------|---|-----------------------------|
| 65/75/85/95/105 | Ø 6,50 mm single barb, 4 shark fins Made in Italy | 2 (14 mm) |

| 0FC4MRC |
|------------|
| 0FC4MRC65 |
| 0FC4MRC75 |
| 0FC4MRC85 |
| 0FC4MRC95 |
| 0FC4MRC105 |





MONOFILAMENT POSITIONER MADE OF THERMOPLASTIC MATERIAL AND GLUED TO THE BARREL



The muzzle allows the traction of the slings to be perfectly parallel to the shaft, maximising propulsion and the exiting velocity of the shaft.



Single or double slings can be assembled on the Mr. Carbon 2.0 muzzle. A line holder, made in stainless steel, is positioned under the muzzle, screwed on the barrel.



The triggering mechanism features an integrated line releaser that can be positioned on the left or on the right side. The line holder on the muzzle can also be positioned either on the left or on the right side.



Sold with two Polypropylene anatomical and adjustable handles. The carbon fiber handle butt is covered in soft thermoplastic material to enhance stability during the charge. Upon request, the left anatomical handle is also available.

It features a special fitting to position the reel C4 Hercules and a second fitting on the hilt to position the reel C4 Vertical.

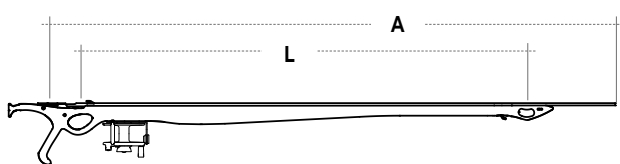
SPEARGUNS

GLADIUS CAMO

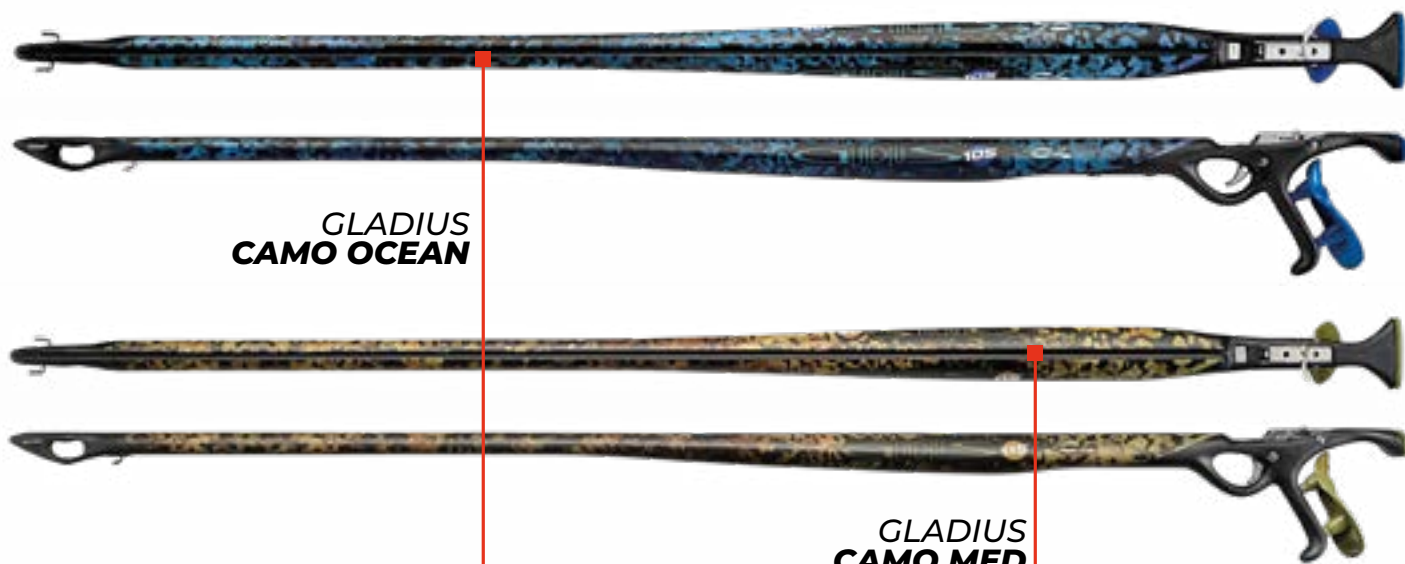
GLADIUS CAMO and CAMO OCEAN are the camouflaged version of the standard GLADIUS speargun.

Inspired by animal camouflage it has been designed by hand by digitally painting a "textured skin" which makes the carbon fiber background visible. The final effect is similar to turtle skin and the colours of a spotted stingray.

The CAMO version is ideal for mediterrean type of settings while the CAMO OCEAN model is indicated for blue water fishing.



| MODEL | L | A |
|-------------|---------|---------|
| GLADIUS 85 | 850 MM | 1200 mm |
| GLADIUS 95 | 950 MM | 1300 mm |
| GLADIUS 105 | 1050 MM | 1400 mm |
| GLADIUS 115 | 1150 MM | 1500 mm |





| |
|--------------|
| 0FC4GLA80CA |
| 0FC4GLA90CA |
| 0FC4GLA100CA |
| 0FC4GLA110CA |

| |
|---------------|
| 0FC4GLA80CAO |
| 0FC4GLA90CAO |
| 0FC4GLA100CAO |
| 0FC4GLA110CAO |

WHITE HANDLE



DELIVERED WITH A DOUBLE
ERGONOMIC HANDLE (BIG AND
SMALL) RIGHT (LEFT UPON
REQUEST)

STANDARD SET UP

| MODEL | SHAFT 17/4 PH | PRIMELINE LATEX SLING |
|-----------|--|--------------------------|
| 85 / 95 | Ø 6.5mm dia. - single barb 4 "shark fins" made in Italy | 1x (16mm black) |
| 105 / 115 | Ø 6.75mm (med) - 7mm (ocean) dia. - single barb 4 "shark fins" made in Italy | 2x (16mm black) |

DELIVERED WITH A DOUBLE
ERGONOMIC HANDLE (BIG AND
SMALL) RIGHT (LEFT UPON
REQUEST)

SPEARGUN **GLADIUS**

STANDARD SET UP

| 0FC4GLA |
|-------------|
| 0FC4GLA 80 |
| 0FC4GLA 90 |
| 0FC4GLA 100 |
| 0FC4GLA 110 |

| MODEL | SHAFT 17/4 PH | PRIMELINE LATEX SLING |
|------------------|--|------------------------------|
| 85 / 95 | Ø 6.5mm dia. single barb 4 "shark fins" made in Italy | 1x (16mm orange fluo) |
| 105 / 115 | Ø 6.75mm dia. single barb 4 "shark fins" made in Italy | 2x (16mm + 14mm orange fluo) |

GLADIUS is a monocoque speargun entirely manufactured in 100% high modulus carbon fiber.

GLADIUS is a fast hydrodynamic gun featuring a rigid barrel for very sharp and stable shooting. It is versatile and **can be used for different types of hunting.**

It has a shape of a cuttlefish bone with a reduced head and a higher volume towards the hand. This shape makes it well balanced and easy to handle in the water. It has an integrated shaft guide over the whole barrel.

The behindhand triggering mechanism is C4 "Auto-R" with an integrated line releaser that can be positioned on the left or on the right side. The mechanism and the trigger are entirely manufactured in stainless steel AISI316.

GLADIUS is sold with **two anatomical and adjustable handles.** The

head, which is integrated in the barrel, is made entirely in carbon fiber and can feature single or double latex bands with a diameter up to Ø18mm. On the head there are two hook shaped stainless steel line holders on the sides and one line holder screwed to the bottom of the barrel.

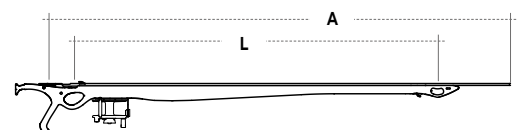
The handle butt is covered in soft plastic material to have more stability during the charge. GLADIUS can mount C4 HERCULES reels.

DELIVERED WITH A DOUBLE ERGONOMIC HANDLE (BIG AND SMALL) RIGHT (LEFT UPON REQUEST)



OPTIONAL ERGONOMIC HANDLE RIGHT OR LEFT.

DELIVERED WITH A RIGHT HANDLE (LEFT UPON REQUEST)



| MODEL | L | A |
|-------------|---------|---------|
| GLADIUS 85 | 850 MM | 1200 mm |
| GLADIUS 95 | 950 MM | 1300 mm |
| GLADIUS 105 | 1050 MM | 1400 mm |
| GLADIUS 115 | 1150 MM | 1500 mm |

VERTICAL CARBON REEL

The C4 Vertical Carbon reel has been designed, for use on spearguns, with vertical assembly.

The supporting structure is made entirely of carbon fiber in a single monocoque piece. This allows the reel to be extremely rigid and light.

The spool is made from a sheet of 100% carbon fiber, by laser cutting. The shaft, the rewind handle and the clutch hand-wheel are made of glass fiber reinforced polypropylene. The arm is made of stainless steel.

The line breaking system, very lightened, is designed to remain as initially set, even with high traction on the line, thus allowing very rapid recoveries.



The exit of the line, during rotation, is guided by two cylinders which prevent it from tangling.

The capacity, with line dia. 1.5mm, is 60 meters



OREC4CARE

VERTICAL REELS

C4 Vertical are speargun reels for vertical use, made of AISI 316 stainless steel and thermoplastic material.

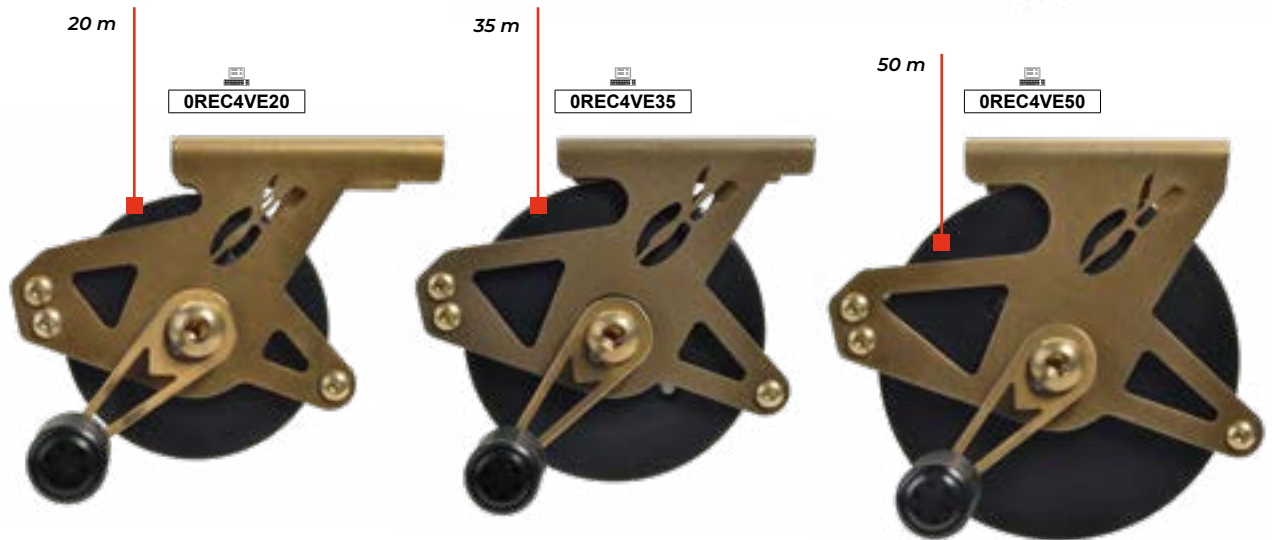
The main structure and the arm are made from sheet metal, by laser cutting and bending and features simple and minimal geometries. The weights, reduced to a mini-mum, thus have little influence on the set-up of the speargun.

The spool is made of polypropylene, through mechanical processing to ensure maximum precision of the parallelism of the external planes, thus enhancing an optimal rotation.

The friction of the reel, very light, is designed to remain as set, even with the traction on the line, to allow quick recoveries.

The exit of the line, during the rotation, is guided by two cylinders that avoid unwanted tangles.

Three models of different sizes are available. The capacities, with a $\varnothing 1.5\text{mm}$ line, are respectively: 20m, 35m and 50m.



SPEARGUN REEL **HERCULES**

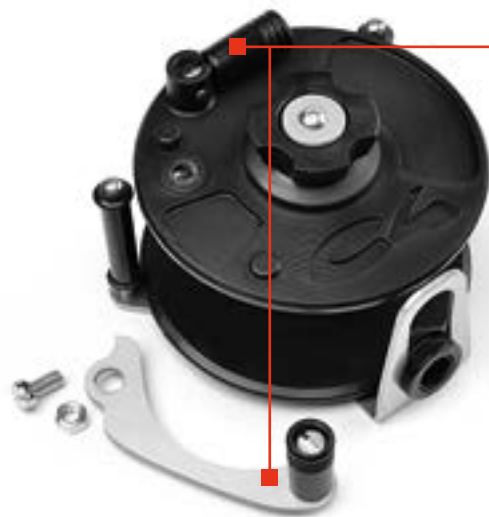
0KC4HER65

The structure of the HERCULES reel is entirely manufactured in stainless steel AISI304 with the main crank assembled by welding. The spool, featuring a $\varnothing 92\text{mm}$ and height of 47mm, is made in Polypropilene and it has a capacity of 65mt $\varnothing 1.5\text{mm}$ line.



Ø 92mm

- Trapezoidal brake system.
- Tension knob manufactured in autolubricating POM material with a trapezoidal thread.
- Brake disc in stainless steel.
- Comes with two stainless steel winding arms: a collapsible arm and an extendible one.
- Easily replaceable $\varnothing 10\text{mm}$ sliding line guide made in POM.
- Total height with folded handle 67.5mm
- Total weight 280g.



DELIVERED
WITH TWO
ARMS

280 g



PRIMELINE **LATEX TUBING**

Exclusively made for C4 by Primeline Industries, this new latex tubing features a fluorescent orange colour and it is **available in 3 different dimensions**.

Since 1982 Primeline Industries has produced the highest quality latex tubing for the spearfishing industry. Primeline has developed a unique latex tubing with unique properties that improve the performance of any spearguns and this quality is recognised unanimously around the world. The latex raw material is a milky substance extracted from plants principally the *Hevea Brasiliensis*. Unlike other producers Primeline doesn't dry the substance prior to working it thereby not breaking the polymer chain. **The outcome is a more elastic rubber with higher resistance to tear.** Primeline's unique physical properties are owned by the production process known as continuous dip which creates pure latex rubber in layer after layer. This long and laborious process creates a **superior rubber**. It produces a virtually protein free latex with more antioxidants than any other latex which it owes its long aging properties to. The 16mm speargun rubber developed for C4's new STANDARD rubber is dipped 125 times whereas the Small ID 16mm is dipped 172 times. After the initial "soak off" which is a loss of stretch inherent in every rubber (9% for Primeline) the C4 Orangebull Standard loses less than 2% per hour. These are the diameters in which the tubing is available and they are

delivered in rolls of 15mt.

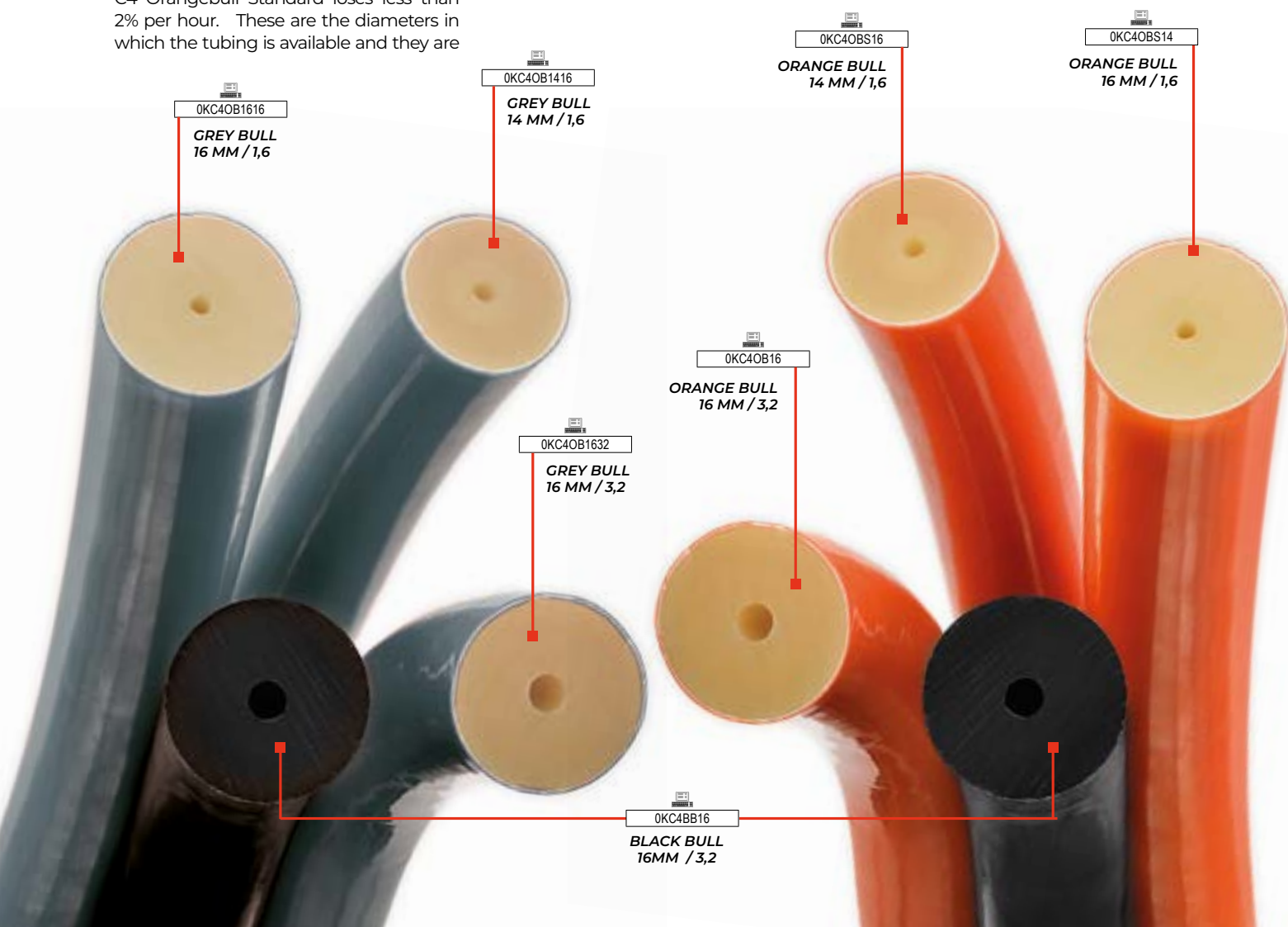
16mm Standard Outside Diameter. 5/8" OD with a 3,2mm / 1/8" ID hole this rubber has the most reliable and renowned advantages of pull effort and power. This thickness is an ever popular standard of the speargun industry. Combines all the advantages of power, pull effort to 350% and Primeline's properties.

14mm Small ID.

The 14mm Small ID with 9/16" OD and 1,6mm / 1,6mm ID hole is increasingly popular for multi-band applications, generating more power than Standard 1/8" hole rubber. Especially well suited for large blue water guns.

16mm Small ID.

The 16mm Small ID with a 5/8" OD and 1,6mm ID hole is the most powerful 16mm rubber on the market. It combines the punch and power of 16mm rubber with the extra volume in the rubber to produce more energy without losing any of its high modulus characteristics. Ideal for single and double band applications.





**PHYSICAL AND MECHANICAL
PROPERTIES SPECIFIC**

| | |
|------------------------|----------|
| TENSILE STRENGTH (PSI) | 146MM |
| ULTIMATE ELONGATION | 750% min |
| HARDNESS (Shore A) | 35 ± 5 |
| 100% MODULUS (psi) | 125 max |
| SPECIFIC GRAVITY | 0.97 max |



C4 LATEX
BANDS ARE
AVAILABLE
IN THREE
DIAMETERS
AND IN
ROLLS OF
15MT.





MASKS +
ACCESSORIES



DESIGNED BY ENRICO SALA

CONDOR

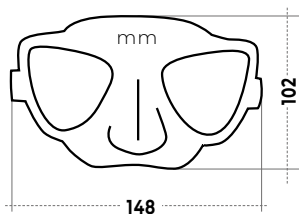
MASK

Condor is a mask designed constructively and ergonomically specifically for spearfishing. The strongest feature on this mask is in fact its exceptional field of vision combined with a limited internal volume which make it exceptional when used at a depth between zero and 30 meters

This was achieved thanks to a design focused on the reduction of spaces and thanks to a mono-structural construction process. The edge of the skirt, well pronounced also in the lower part of the nose, features a perimetrical sealing gasket, well inclined and structured, and the velvety internal finish increases its water tightness.

The strap is attached to the mask via two soft buckle holders that fit onto the edge of the lenticular frame using a perimetrical band which is double the standard size. This feature allows uniform traction over the entire area of the skirt, thus significantly increasing comfort.

Condor is available in various color versions including two camouflage models.



| | CONDOR | FALCON | PLASMA | PLASMA XL |
|-----------------|----------------------|--------------------|---------------------|---------------------|
| WIDTH | 148 mm | 137 mm | 146 mm | 157 mm |
| HEIGHT | 102 mm | 100 mm | 100 mm | 104 mm |
| INTERNAL VOLUME | | 95 cm ³ | 113 cm ³ | 123 cm ³ |
| LENS AREA | 24,5 cm ² | 36 cm ² | 48 cm ² | 57 cm ² |

NEW




ANATOMICAL AND
ADJUSTABLE SILICONE
STRAP



STRAP RELEASE SYSTEM
POSITIONED ON THE SKIRT

3MM ULTRA CLEAR TEMPERED GLASS
LENSES

SOFT 50° SH SILICONE
SKIRT WITH VARIABLE
THICKNESS AND INTERNAL
MATT FINISH.



0MAC4COBK **BLACK**



0MAC4COCA **CAMO**



0MAC4COCO **CAMO
OCEAN**









MASK

FALCON

FALCON has been conceived and designed specifically for deep freediving. The greatest feature of this mask is the low internal volume, obtained thanks to a design focused on containing space and a single piece structure.

The silicone skirt features an inner gasket and a velvet finish that greatly increase its sealing capacity.

The geometries are highly hydrodynamic and the mask travels through water without any tensions typical of deep dives and fast ascents.

The field of vision has been optimised so has to be reduced in the unnecessary areas but allowing a great vision for spearfishing too.

The buckles are attached to the mask skirt allowing for a very good and even fitting when wearing the mask.



| | CONDOR | FALCON | PLASMA | PLASMA XL |
|-----------------|----------------------|--------------------|---------------------|---------------------|
| WIDTH | 148 mm | 137 mm | 146 mm | 157 mm |
| HEIGHT | 102 mm | 100 mm | 100 mm | 104 mm |
| INTERNAL VOLUME | | 95 cm ³ | 113 cm ³ | 123 cm ³ |
| LENS AREA | 24,5 cm ² | 36 cm ² | 48 cm ² | 57 cm ² |

0MAC4FAR **RED**



0MAC4FAN **BLACK**



0MAC4FAB **WHITE**





**ANATOMICAL AND
ADJUSTABLE STRAP.**



**BUCKLE SYSTEM POSITIONED ON
THE MASK SKIRT.**

ULTRACLEAR 3MM LENSES.

**SOFT SILICONE SKIRT
50°SHA WITH VARIABLE
THICKNESS AND VELVET
INNER FINISH**



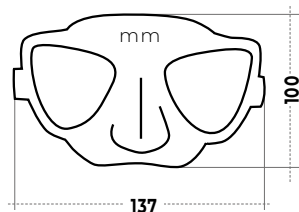
 **SILVER**
0MAC4FAGP



 **FIRESTONE**
0MAC4FAP



PIRATE



MASKS

PLASMA

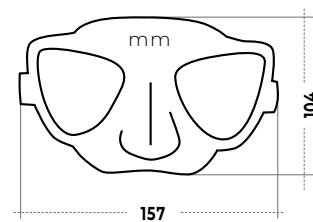
| | FALCON | PLASMA | PLASMA XL |
|-----------------|--------------------|---------------------|---------------------|
| WIDTH | 137 mm | 146 mm | 157 mm |
| HEIGHT | 100 mm | 100 mm | 104 mm |
| INTERNAL VOLUME | 95 cm ³ | 113 cm ³ | 123 cm ³ |
| LENS AREA | 36 cm ² | 48 cm ² | 57 cm ² |

PLASMA is a mask made in anal-
lergic silicone and it is designed
specifically for free diving and
spearfishing.

It features a wide field of vi-
sion and an extremely redu-
ced internal volume. The field
of vision of PLASMA has been
optimised thanks to two fac-
tors: the geometry of the len-
ses and the reduced distance of
the lenses from the eyes. This has
been achieved by manufacturing the
mask in a single piece.

PLASMA XL has a similar geometry
and technical features but it's been
designed 10% larger than the standard
PLASMA, increasing the comfort but
not compromising the small internal
volume.

MASK **PLASMA XL**



ANATOMICAL
ADJUSTABLE
SILICONE STRAP.



ULTRA RESISTANT 3MM
TEMPERED GLASS.

POLYCARBONATE
BUCKLES

MASK SKIRT MADE IN
50°SHA SOFT SILICONE
WITH A VARIABLE
THICKNESS AND
VELVET FINISH ON THE
INSIDE.

CLEAR LENSES



BLACK

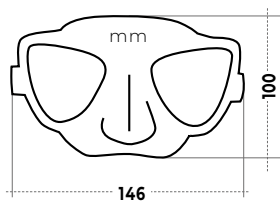
0MAC4PLXLN



WHITE

0MAC4PLXLB

MASK **PLASMA**



ANATOMICAL
ADJUSTABLE
SILICONE STRAP.



POLYCARBONATE
BUCKLES

MASK SKIRT MADE IN
50°SHA SOFT SILICONE
WITH A VARIABLE
THICKNESS AND
VELVET FINISH ON THE
INSIDE.

ULTRA RESISTANT
3MM TEMPERED
GLASS.

CLEAR LENSES

BLACK

0MAC4PLN



WHITE

0MAC4PLB



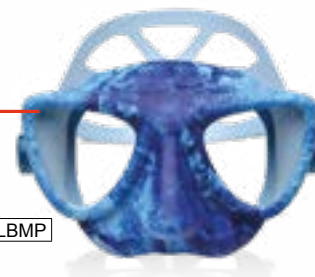
CAMO
MED

0MAC4PLCA



CAMO
OCEAN

0MAC4PLBMP



MIRRORED LENSES



BLACK

0MAC4PLNM



CAMO MED

0MAC4PLCAMY



CAMO OCEAN

0MAC4PLCAOCMB

SNORKEL **MISTRAL**

Soft

This snorkel is designed specifically for freediving and spearfishing. It features an anatomical bite made in hypoallergenic silicone which allows prolonged use in water.

The tube is manufactured in a particularly soft material with a great elastic memory.

Available in black and silver colours.

NEW

PARTICULARLY
SOFT MATERIAL

BLACK

0SNC4MIS



SNORKEL **MISTRAL**

Mistral is a snorkel specifically designed for freediving and spearfishing. It features an anatomical bite in non-allergenic silicone for long use. The tube is molded in two different materials with a different hardness. The central part of the tube is made in semi-rigid thermoplastic and the upper part of the snorkel is made in a softer more flexible material.

TOP
SOFT PART



MADE IN ITALY



SPECIFIC DETERGENTS

In the past twenty years, because mask skirts have been manufactured in synthetic liquid silicone rather than natural rubber, the problem of the fogging of the lenses has greatly increased.

Silicone oils must be added to the basic silicone material to be able to mould the mask skirt at high temperatures (over 150C). During and after moulding these oils migrate on the lenses creating a sort of film which causes the fogging.

The cooperation between C4 Srl, manufacturer of diving products, and REAL CHIMICA Srl, world leader in the creation and manufacturing of cleaning products, such as the renown "Chantecalir", has started a year ago with the intent of solving, once and for all, the fogging problem on diving products.



ABSOLUTE CLEANER

The first degreasing products on the market specifically designed for diving masks, new and used, which prevents fogging problems and no side effects. Available in containers with sprayers in size 50ml and 250ml.

| | |
|-------|-----------------|
| SIZES | 50 ml 250 ml |
|-------|-----------------|

| |
|----------|
| 0KC4C |
| 0KC4C050 |
| 0KC4C250 |



EXTREME ANTIFOG

The ideal product to be applied on the glass lenses of diving masks which have been previously treated with the ABSOLUTE CLEANER and on the polycarbonate lenses of swimming goggles. Available in containers with sprayers in size 50ml and 250ml .

| | |
|--------------|-----------------|
| SIZES | 50 ml 250 ml |
|--------------|-----------------|

| |
|---|
|  |
| 0KC4A |
| 0KC4A050N |
| 0KC4A250 |





C4
C 4 C A R B O N

2024

ENG

**FINS +
FOOTPOCKETS**



FROM THE ROAD **TO THE WATER**

C4 was born in 1986 thanks to the passion of Nicoletta and Marco Bonfanti.

Until the mid 1980s, bicycle forks and frames were all manufactured with metal tubes. Marco Bonfanti has a revolutionary idea and designs AERO: the first carbon fiber monocoque bicycle frame in the world.

The revolutionary process for the moulding of carbon fiber, called NJC (No Joint Construction) allows C4 to manufacture complex structures in composite materials which are hollow and without junctions. This manufacturing process will be the technical base on which future products will be designed and developed.





In 1989, Marco Bonfanti, passionate about diving, manufactured the first carbon fiber fin blades in the world. It is a leap forward and the world of freediving will never be the same.

C4 has pursued, in the years, a technical and functional vision with a focus on the design of its products. New models of fins have been developed through the years and in 2000 C4 intro-





INNOVATION AND **DESIGN**

duced to the market MONOSCOCCA: the first speargun in the world manufactured with a monocoque carbon fiber hollow structure. In 2019 a new important era begins for C4. The Ciceri brothers, former owners of Omersub, purchase a major part of the company.



**OUR PRODUCTS MANUFACTURED IN ITALY ARE
MADE 100% WITH SOLAR ENERGY**





ENVIRONMENTAL **CONSCIOUSNESS**

Today, C4 is a company with deep roots in the North of Italy and its products are distributed all over the world. The manufacturing of the carbon fiber blades is entirely carried out in Italy through an innovative and environmentally friendly process. Every C4 product fea-

tures an exclusive design and they are designed, prototyped and tested internally at our manufacturing facilities in Albiate (MB) and Olginate (LC). Innovation, design and the continuous search of performance are at the base of all C4 products and they are an integral part of our DNA.



 **MADE IN ITALY**

FOOTPOCKET 200

The rational revolution
“made in C4”

The first and only diving shoes in the world to allow customization of the biomechanics of kicking, they feature a minimum mass, a new concept of hydrodynamics, specific mechanical performance, very high comfort and an elegant and exclusive design.

SOLE

Made of polypropylene, it has a progressive rigidity and constitutes the supporting skeleton of the 200. In the insole, 3+3 threaded brass bushes are co-molded for the customisable connection of the blade.

UPPER

Characterised by its reduced thickness, the upper is overprinted directly to the insole. To better adapt to the physical characteristics of people, the upper is made in two different hardnesses, 65 Sh for the smaller sizes and 74 Sh for the larger ones (see table).

HYDRODYNAMICS

The geometric separation between the shoe and the blade generates an advanced hydrodynamics, eluding the classic resistances of traditional fins. The fluid threads flow around the shoe and the blade works, along its entire length, creating non-turbulent fluid threads.

FIT

The 200 have the classic anatomy of C4 footpockets with a pre-shaped angle of 3°. The reduced thickness of the upper and the elasticity of the material allow an easy fit and high comfort. The upper wraps the foot without creating constriction, therefore not creating impediments to the blood flow, allowing it to maintain its warmth for a long time.



| | |
|-----------------|--|
| WEIGHT | starting from 150 gr |
| ANATOMY | pre-shaped angle of 3 ° |
| COLORS | White - Red - Green |
| BLADE | Compatible with 200 footpockets only |
| MATERIAL | UPPER: Thermoplastic elastomer. SOLE: Polypropylene |



3+3

On the 200 the biomechanics can be customised by allowing to position the blade in three different 3 positions. By changing the position, the force levers between the foot and the blade are modified with a consequent personalisation of the kick.



PROTECTION

The heel of the 200 shoes has three anti-slip pads to protect the foot. A polyurethane shock absorber is positioned between the shoe and the blade to dampen the stress peaks on the blades.



EU

36/37
38/39
40/41
41/42
42/43
43/44
44/45



US

4/4.5
5.5/6
7/8
8/9
8.5/9.5
9.5/10.5
11/12

Assembly kit for 200 footpockets



0KC4200N

 **MADE IN ITALY**

FOOTPOCKET

250

The 250 is the latest evolution of the fin footpocket created by C4.

Thanks to the use of a TPE 75 ShA polymer overmolded on a rigid sole, the 250 foot pocket transmits energy from the foot to the blade in the best possible way, resulting in highly efficient fins.

Comfortable 3° pre-shaped fit;

Thin thicknesses that increase comfort and do not cause foot pain;

Hydrodynamic shape and reduced dimensions that make it glide effortlessly in the water.

100% MADE IN ITALY

All C4 carbon fiber blades have always been entirely manufactured in our production plant in Italy. Starting this year, a new plastic injection department has been added at C4 plant and this is where the 250 footpockets and UP blades are manufactured.



matte
surface
finish



The assembly and
disassembly of the blade
is quick and simple and
the overall dimensions are
optimal in case
of air travel.

Blade assembly with a sturdy
M6 screw on a hand grip nut;

| | |
|----------|-------------------------------------|
| WEIGHT | Starting from 250g |
| ANATOMY | Reshaped at 3° |
| COLORS | Black - White |
| BLADE | Interchangeable with an M6 screw |
| MATERIAL | TPE 75 ShA - high modulus TPA |

Very low weight of
only 250gr thanks
to the TPE 75 ShA
material over-moulded
on a rigid high
modulus TPE insole;



BLACK



OSC4250B
OSC4250B 36-44

WHITE



OSC4250W
OSC4250W 36-44

Assembly kit
for 250 footpockets



0KC4250N



EU

36/37
38/39
40/41
41/42
42/43
43/44
44/45



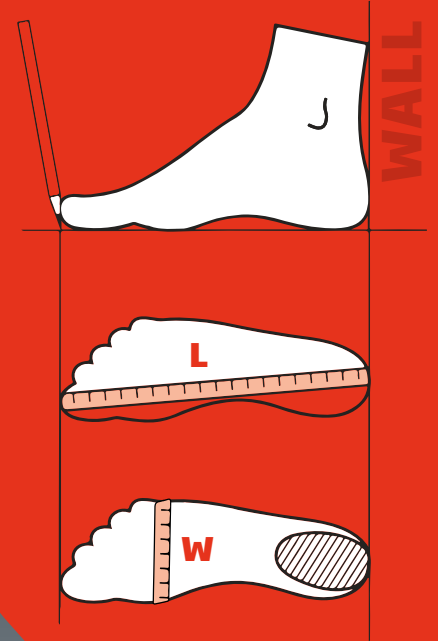
US

4/4.5
5.5/6
7/8
8/9
8.5/9.5
9.5/10.5
11/12



CHOOSE YOUR **FOOTPOCKET FIT**

- Position a sheet of paper on the floor next to a wall.
- Position your foot heel next to the wall keeping your foot on the paper.
- Take note of the length and width of your foot.
- Measure the dimensions.
- Choose the footpocket that better fits your foot from the table.



| EU SIZE | US SIZE | 200 | 250 | L MAX | W MAX |
|---------|------------|-----|-----|--------|--------|
| 36 / 37 | 4 / 4.5 | ✓ | ✓ | 223 mm | 87 mm |
| 38 / 39 | 5.5 / 6 | ✓ | ✓ | 242 mm | 94 mm |
| 40 / 41 | 7 / 8 | ✓ | ✓ | 261 mm | 101 mm |
| 41 / 42 | 8 / 9 | ✓ | ✓ | 264 mm | 104 mm |
| 42 / 43 | 8.5 / 9.5 | ✓ | ✓ | 280 mm | 108 mm |
| 43 / 44 | 9.5 / 10.5 | ✓ | ✓ | 284 mm | 112 mm |
| 44 / 45 | 11 / 12 | ✓ | ✓ | 299 mm | 115 mm |
| 46 / 47 | 12 / 13 | ✗ | ✓ | 318 mm | 122 mm |
| 48 / 49 | 13 / 14 | ✗ | ✗ | 337 mm | 129 mm |

FOCUS ON CARBON FIBER



Carbon fiber, carbon fiber fabric and how it is used.

Carbon fiber is material which is produced initially in a thread. Thousands of these threads, together, make up a bigger thread which is then used as a standard fabric and can therefore be braided and woven to create a carbon fiber cloth.

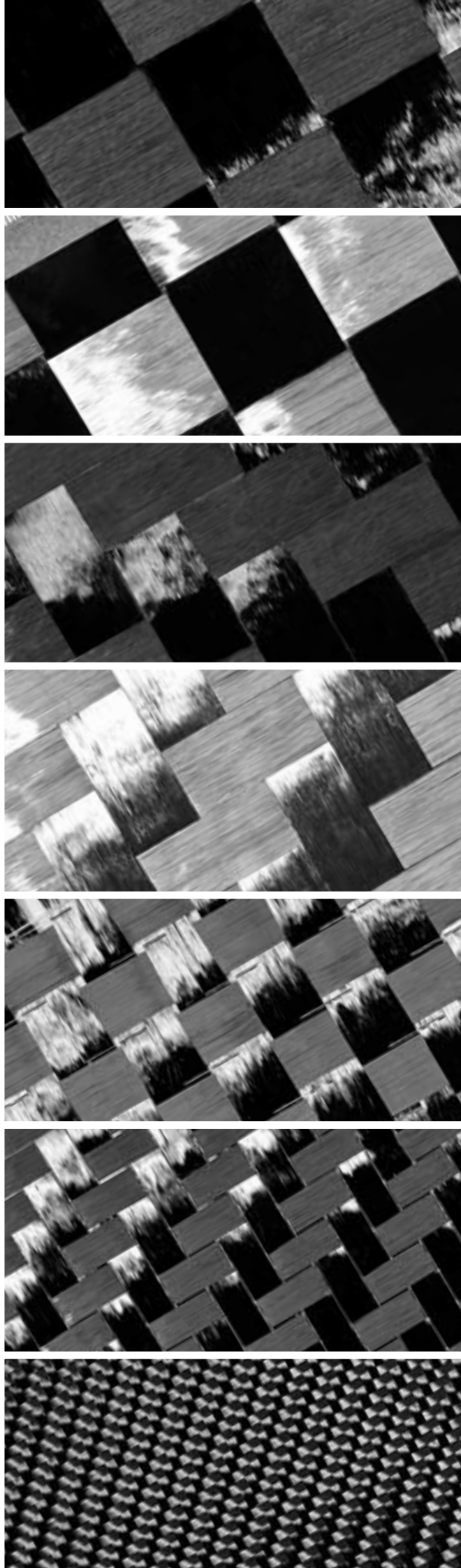
Carbon fiber fabrics are used to create a variety of “composites” which are called this way because they are made up of carbon fiber and a so called matrix, generally a resin. The matrix keeps the fibers in place so that they can be in the correct position and work efficiently. It also protects the fibers and keeps the product in its original shape.

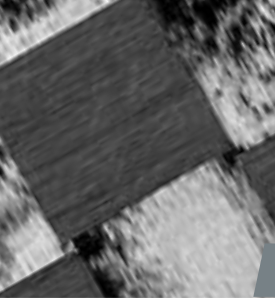
Many different carbon fiber fabrics. How do we choose the best one for our application.

There are many different types of carbon fibers which feature a different resistance and elastic module. Excellent fin blades must be resistant and, at the same time, they must be flexible and reactive. These characteristics are achieved by using High Tensil fabrics which have the best elasticity among all carbon fibers, in combination with a low percentage of resin in the composite.

A further improvement is achieved by using “Spread Tow” fabrics. These fabrics make the blades highly reactive and prevent breakings. C4 blades are extremely resistant and reactive and they maintain their features over time.

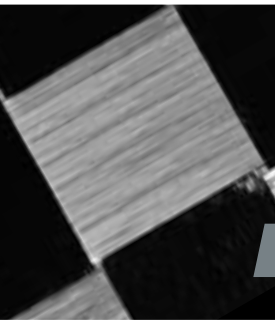
| | CARBON FIBER YARN TYPE | HIGH TENSIL | FIN BLADE TENSILE STRENGTH % | FIN BLADE ENERGY ABSORPTION% | FIN BLADE ELASTIC LIMIT % |
|------------------|---------------------------|----------------|------------------------------------|---------------------------------|---------------------------------|
| HT BLACK 25P | TR50S 15K | 4900 MPA | 340% | 38% | 260% |
| HT ALU 25P | TR50S 15K | 4900 MPA | 340% | 38% | 260% |
| HT BLACK 15P | TR50S 15K | 4900 MPA | 320% | 40% | 250% |
| HT ALU 15P | TR50S 15K | 4900 MPA | 320% | 40% | 250% |
| T700 PERFORMANCE | T700 12K | 4900 MPA | 240% | 50% | 200% |
| T700 SUPERFORCE | T700 12K | 4900 MPA | 210% | 66% | 150% |
| T300 TW | T300 3K | 3530 MPA | 100% | 100% | 100% |





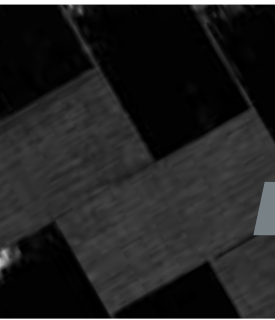
HT BLACK 25P

Mitsubishi TR50S HighTensile 4900 MPa
"Flat" carbon fiber. Spread tow fabrics
construction crossed with 25mm (1")
Plain UD carbon fiber.



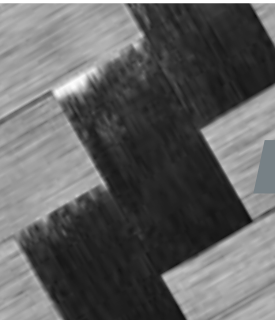
HT ALU 25P

Mitsubishi TR50S HighTensile 4900 MPa
"Flat" carbon fiber. Spread tow fabrics
construction crossed with 25mm (1")
Plain UD carbon fiber. 50% of the surface
is aluminised and refracting.



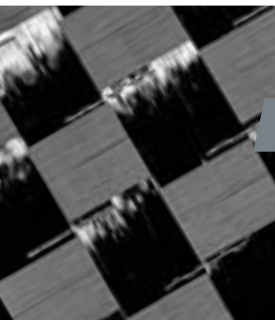
HT BLACK 15T

Mitsubishi TR50S HighTensile 4900 MPa
"Flat" carbon fiber. Spread tow fabrics
construction crossed with Twill of 15mm
(19/32") UD carbon fiber.



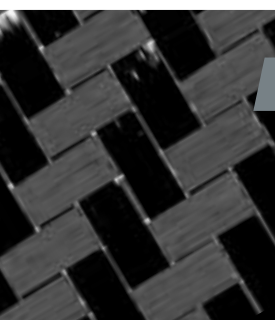
HT ALU 15T

Mitsubishi TR50S HighTensile 4900 MPa
"Flat" carbon fiber. Spread tow fabrics
construction crossed with Twill of 15mm
(19/32") UD carbon fiber. 100% of the
surface is aluminised and refracting.



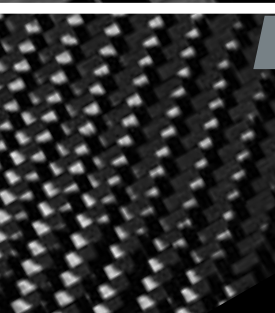
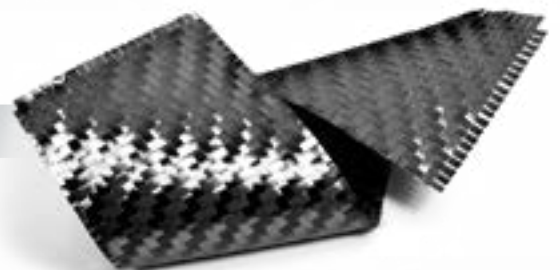
T700 PERFORMANCE

Toray T700S HighTensile 4900 MPa
carbon fiber. Spread tow construction
15mm (19/32") plain fabrics.



T700 SUPERFORCE

Toray T700S HighTensile 4900 MPa
carbon fibre. 7mm (9/32" inch) plain
fabrics construction.



T300 TW







Toray T300 HighTensile 3530 MPa carbon
fibre. Twill fabrics construction.



FINs COMPARISON TABLE

CARBON FIBER BLADE FINs

SUGGESTED USE

| | 200 APNEA | 200 PESCA | 200 BETTA | 200 FIRESTONE | 200 CAMU | MB 001 | MB 002 |
|--------------|---|---|---|--|---|---|---|
| |  |  |  |  |  |  |  |
| SPEARFISHING | X | ✓ | ✓ | ✓ | ✓ | ✓ | ✓ |
| FREEDIVING | ✓ | ✓ | ✓ | ✓ | ✓ | ✓ | ✓ |

FEATURES

| MATERIAL | HT 15 | HT 15 | HT 15 | HT 15 | HT 15 | T 700 | T 700 |
|--------------------------------|---|---|---|---------------------------------------|---|---|------------------------------------|
| BLADE SIZE | 940 x 192 mm | 940 x 192 mm | 940 x 192 mm | 770 X 192 mm | 770 X 192 mm | 806 x 195 mm | 874 x 192 mm |
| HARDNESS | 20 EXTRA SOFT 25 SOFT 30 MEDIUM | 25 SOFT 30 MEDIUM 35 MED-HARD | 20 EXTRA SOFT 25 SOFT | 25 SOFT 30 MEDIUM 40 HARD | 25 SOFT 30 MEDIUM 40 HARD | 20+ SOFT 25+ MEDIUM 30+ HARD | 20+ SOFT 25+ MEDIUM 30+ HARD |
| ANGLE | 29° + 3° = 32° | | | | | | |
| FEATURED WITH FOOTPOCKET | mod. 200 upper: black sole: white | mod. 200 upper: black sole: green | mod. 200 upper: black sole: white | mod. 200 upper: black sole: red | mod. 200 upper: black sole: green | mod. 250 black | mod. 250 black |
| TOTAL WEIGHT | starting from 510 gr. | starting from 510 gr. | starting from 510 gr. | starting from 450 gr. | starting from 450 gr. | starting from 500 gr. | starting from 520 gr. |
| WATER RAIL | PRE-SHAPED ANGLE OF 3 ° | | | | | ELASTIC-K10 BLACK | ELASTIC-K10 BLACK |
| | WHITE | GREEN | WHITE/BLACK | RED/BLACK | GREEN | | |
| FOOTPOCKET COMPATIBILITY | COMPATIBLE WITH 200 FOOTPOCKETS ONLY | | | | | COMPATIBLE WITH 250 FOOTPOCKETS ONLY | |
| FEATURED WITH A BAG | ✓ | ✓ | ✓ | ✓ | ✓ | X | X |

| |
|--|
| PALA FALCON |
|  |
| ✓ |
| ✗ |

| |
|---|
| T700 SUPERFORCE |
| 790 x 190 mm |
| 25 SUAVE 30 MEDIA 40 DURA |
| 29° |
| ✗ |
| 240 gr. |
| ELASTIC-K10 NERO |
| C4: 300 / 400 (KIT ADAPTER) MARES: RAZOR OMER: STINGRAY, EAGLERAY |
| ✗ |

PLASTIC BLADE FINS

| | NEW STORM | NEW PREDATOR | UP BLACK |
|--------------------------|---|---|---|
| |  |  |  |
| SUGGESTED USE | | | |
| SPEARFISHING | ✓ | ✓ | ✓ |
| FREEDIVING | ✓ | ✓ | ✓ |

FEATURES

| | | | |
|---|--|--|---|
| MATERIAL | THERMOPLASTIC | THERMOPLASTIC | THERMOPLASTIC |
| BLADE SIZE | 780 X 195 with footpocket size 42/43 | 870 X 195 with footpocket size 42/43 | 800 x 195 mm |
| HARDNESS | SOFT | SOFT | SOFT MEDIUM |
| ANGLE | 29° + 3° = 32° | | |
| FEATURED WITH FOOTPOCKET | mod. 250 black | mod. 250 black | mod. 250 black |
| TOTAL WEIGHT | 590 gr with footpocket size 42/43 | 630 gr with footpocket size 42/43 | starting from 670 gr |
| WATER RAIL | CO-MOULDED IN FLEXIBLE THERMOPLASTIC MATERIAL | | |
| FOOTPOCKET COMPATIBILITY | NO | NO | CAN ONLY BE ASSEMBLED ON 250 FOOTPOCKETS |
| FEATURED WITH A BAG | ✗ | ✗ | ✗ |



200

MADE IN ITALY

For over 30 years, C4 has been designing and manufacturing carbon fins in Italy. C4 was the first company in the world to produce carbon fiber fins and has gained an unparalleled experience that has led today to the creation of the 200 fins: a unique product of its kind. In the fins 200 the resonance frequency of any elastic structure, normally known as the elastic response, is particularly enhanced by the special and dedicated lamination of the blades.

Four different types of carbon fiber have been engineered to give the blades a curvature with the consequent resonance, predefined in the design phase.

The industrial production system of C4 has made it possible to eliminate approximations and inhomogeneities typical of manual craftsmanship.

The 200 feature new and specific 100% carbon fiber blades. Designed, manufactured and tested in C4, they offer a completely new progressive lamination, made with 4 different types of carbon fiber, reaching unprecedented levels of reactivity and resistance.

WATER RAILS.

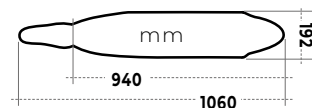
Thanks to an exclusive production process, property of C4, the water rails of the 200 series are co-moulded on the blades. This particular technology allows the elimination of gluing and allows the application of water rails of complex shapes made with elastic and highly tough thermoplastic materials.

L-1090 PESCA

MADE IN ITALY

These fins are specifically designed for deep sea fishing and they feature an hydrodynamic anti-turbulence flap. Dedicated blades are available in three stiffnesses: 25 (soft), 30 (medium) and 35 (medium-hard). Paired with 200 footpockets, they feature a visible carbon fiber graphics and colouring in black and military green, for the logos, water rails and the footpockets.

| | |
|-------------------------|---|
| MATERIAL | HT 15T |
| BLADE HARDNESS | Soft 25 - Medium 30 - Medium/Hard 35 |
| WATER RAILS | Variable geometry. Overmolded under high pressure |
| FINS WEIGHT | starting from 510gr. |
| BLADE ATTACHMENT | 3+3 with shock absorber |



UPON REQUEST, IT IS POSSIBLE TO COMBINE BLADES WITH OTHER COLORS.

| |
|------------------------|
| OPC4L1090P |
| OPC4L1090P25 - 36C/44C |
| OPC4L1090P30 - 36C/44C |
| OPC4L1090P35 - 36C/44C |

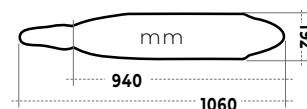
200

L-1090 **APNEA**

MADE IN ITALY

These fins are **specifically designed for freediving** and they feature an hydrodynamic an-ti-turbulence flap. Dedicated blades are available in three stiffnesses: 20 (extra-soft), 25 (soft) and 30 (medium). Paired with shoes 200 footpockets, they feature a visible car-bon fiber graphics and colouring in white, for the logos, water rails and the footpockets.

| | |
|-------------------------|---|
| MATERIAL | HT 15T |
| BLADE HARDNESS | Extra Soft 20 - Soft 25 - Medium 30 |
| WATER RAILS | Variable geometry. Overmolded under high pressure |
| FINS WEIGHT | starting from 510gr. |
| BLADE ATTACHMENT | 3+3 with shock absorber |



UPON REQUEST, IT IS POSSIBLE TO COMBINE BLADES WITH OTHER COLORS.



200

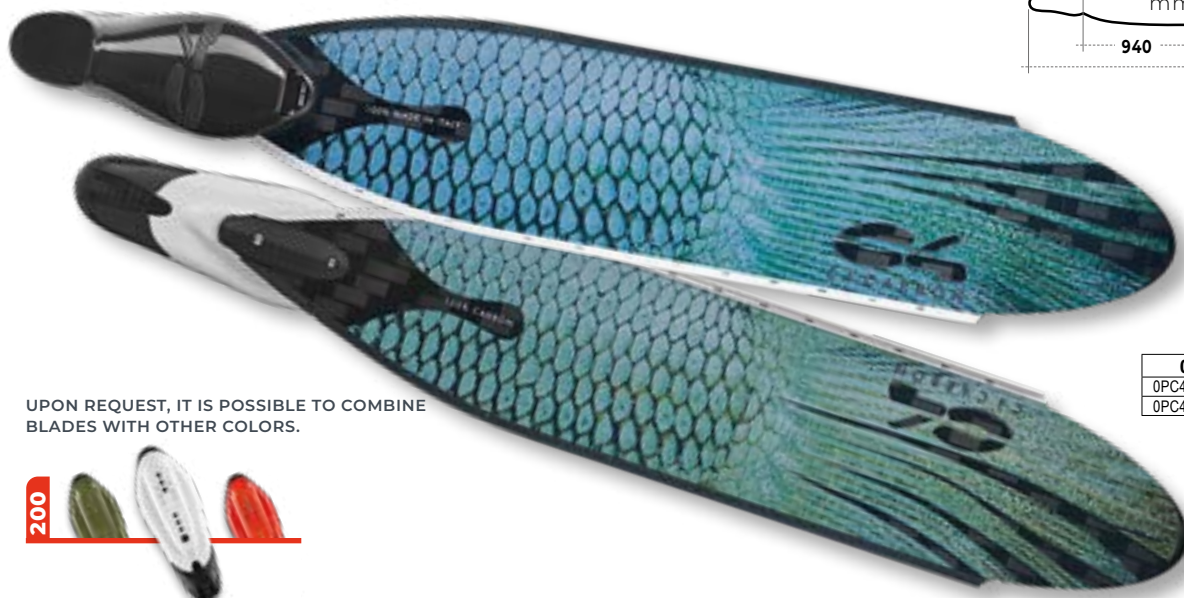
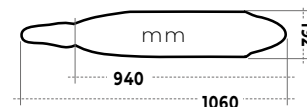
| |
|------------------------|
| 0PC4L1090A |
| 0PC4L1090A20 - 36C/44C |
| 0PC4L1090A25 - 36C/44C |
| 0PC4L1090A30 - 36C/44C |

L-1090 **BETTA**

MADE IN ITALY

These fins are **specifically designed for freediving** and they feature an hydrodynamic an-ti-turbulence flap. Dedicated blades are available in two stiffnesses: 20 (extra-soft) and 25 (soft). Paired with 200 footpockets, they feature the graphic theme "Betta Splen-dens". The blades are paired with footpockets with a black upper and white insole. The water rails feature a black and white asymmetrical colouring.

| | |
|-------------------------|---|
| MATERIAL | HT 15T |
| BLADE HARDNESS | Extra Soft 20 - Soft 25 |
| WATER RAILS | Variable geometry. Overmolded under high pressure |
| FINS WEIGHT | starting from 510gr. |
| BLADE ATTACHMENT | 3+3 with shock absorber |



UPON REQUEST, IT IS POSSIBLE TO COMBINE BLADES WITH OTHER COLORS.



200

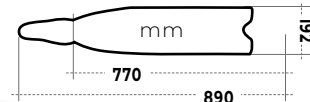
| |
|------------------------|
| 0PC4L1090B |
| 0PC4L1090B20 - 36C/44C |
| 0PC4L1090B25 - 36C/44C |

S-990 **FIRESTONE**

MADE IN ITALY

These fins are specifically designed for spearfishing. The blades with dovetail terminal are available in three stiffnesses: 25 (soft), 30 (medium) and 40 (hard). Paired with 200 footpockets, they feature a visible carbon fiber graphics and colouring in black and red, for the logos, water rails and the footpockets. The water rails feature an asymmetrical colouring.

| | |
|-------------------------|---|
| MATERIAL | HT 15T |
| BLADE HARDNESS | Soft 25 - Medium 30 - Hard 40 |
| WATER RAILS | Variable geometry. Overmolded under high pressure |
| FINS WEIGHT | starting from 450gr. |
| BLADE ATTACHMENT | 3+3 with shock absorber |



UPON REQUEST, IT IS POSSIBLE TO COMBINE BLADES WITH OTHER COLORS.



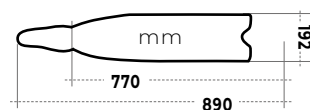
| |
|-----------------------|
| 0PC4S990F |
| 0PC4S990F25 - 36C/44C |
| 0PC4S990F30 - 36C/44C |
| 0PC4S990F40 - 36C/44C |

S-990 **CAMU**

MADE IN ITALY

These fins are specifically designed for spearfishing. The blades with dovetail terminal are available in three stiffnesses: 25 (soft), 30 (medium) and 40 (hard). Paired with 200 footpockets, they feature a visible carbon fiber graphics and colouring in green and brown, for the logos, water rails and the footpockets. The water rails feature an asymmetrical colouring.

| | |
|-------------------------|---|
| MATERIAL | HT 15T |
| BLADE HARDNESS | Soft 25 - Medium 30 - Hard 40 |
| WATER RAILS | Variable geometry. Overmolded under high pressure |
| FINS WEIGHT | starting from 450gr. |
| BLADE ATTACHMENT | 3+3 with shock absorber |



UPON REQUEST, IT IS POSSIBLE TO COMBINE BLADES WITH OTHER COLORS.



| |
|-----------------------|
| 0PC4S990C |
| 0PC4S990C25 - 36C/44C |
| 0PC4S990C30 - 36C/44C |
| 0PC4S990C40 - 36C/44C |

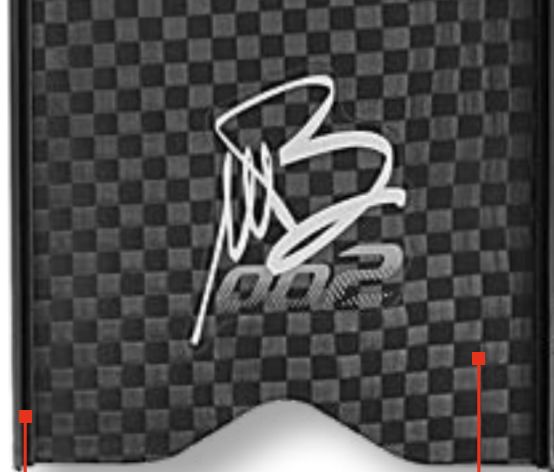




For the development of these fins we started from the design of the foot pocket. MB Fins feature the new 250 foot pocket, a direct derivation of the previous 300 model.

Thanks to the use of a TPE 75 ShA polymer overmolded on a rigid sole, the 250 foot pocket transmits energy from the foot to the blade in the best possible way, resulting in highly efficient fins.

The design of the geometries has allowed to use minimum thicknesses resulting in a reduction of the weight of the 250 footpocket in size 41/42 to just 250gr.



WATER RAIL

MB fins feature new rounded section water rails that improve water containment on the blade and reduce water vortexes on the outer sides.



SURFACE

matte surface finish

ANATOMY

The 3° pre-shaped anatomy of the 250 makes it particularly comfortable to wear. The reduced thicknesses fit the shape of the upper to the shape of the foot, without painful constraints.

PERFORMANCE

The connection between the foot pocket and the blade, thanks to the internal sole, is rigid and solid, and transmits the force to the blades efficiently. The assembly of the blade on the footpocket without side horns, already created by C4 in 2006, allows an elastic bending of the blade along its entire length.

MB BLADES

In MB fins, the major factor that increases performance is the new dedicated "Reverse Parabolic" lamination; a parabolic curvature which, instead of having the part with greater flexion at the top, it is near the foot. This dedicated lamination significantly changes the mechanical behaviour of the fin. The surface that generates the thrust is in fact greater than the surface that generates hydrodynamic resistance, thus producing greater elastic deformations and greater propulsion. There is such a big advantage that it is possible to use stiffer blades, therefore with greater performance, but using the same effort normally used with lighter blades.

Taking advantage of this feature we have raised the relative performance. A "+" has been added to the hardnesses. This is because, flexed in the hand, an MB 25+ is stiff and pushes as much as a standard 30 while weighing in the water like a 25.

Restarts from the bottom, accelerations and speeds are thus higher.

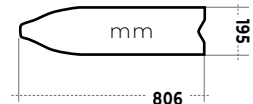
MB fins are named after their creator: Marco Bonfanti, who wanted to personally sign his new fin project featuring the "Reverse Parabolic" curved blades.



MB 001

MB1 are the futuristic version of the traditional spearfishing universal fin.

| | |
|----------------|-----------------------|
| MATERIAL | T 700 |
| BLADE HARDNESS | 20+, 25+, 30+ |
| WATER RAILS | ELASTIC-K10 NERO |
| FINS WEIGHT | starting from 500 gr. |



| |
|---------------------|
| 0PC4MB1 |
| 0PC4MB120 - 36C/44C |
| 0PC4MB125 - 36C/44C |
| 0PC4MB130 - 36C/44C |

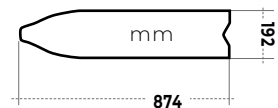
UPON REQUEST, IT IS POSSIBLE TO PAIR
THESE BLADES WITH WHITE COLOR
250 FOOTPOCKETS



MB 002

MB2 are long fins designed for deep dives.
They combine performance and tradition.

| | |
|----------------|--------------------|
| MATERIAL | T 700 |
| BLADE HARDNESS | 20+, 25+, 30+ |
| WATER RAILS | ELASTIC-K10 NERO |
| FINS WEIGHT | tarting from 520 g |



| |
|---------------------|
| 0PC4MB2 |
| 0PC4MB220 - 36C/44C |
| 0PC4MB225 - 36C/44C |
| 0PC4MB230 - 36C/44C |

UPON REQUEST, IT IS POSSIBLE TO PAIR
THESE BLADES WITH WHITE COLOR
250 FOOTPOCKETS



CARBON FIBER BLADE FINIS

FALCON BLADE

FALCON are fin blades made in 100% T700 SUPERFORCE carbon fibre material. They can be assembled on traditional foot pockets such as Mares Razor and Omersub Stingray.

| | |
|----------------|--------------------------------|
| MATERIAL | T700 Superforce |
| BLADE HARDNESS | 25 soft – 30 medium 40 hard |
| WATER RAILS | Elastic-K10 black |
| FINS WEIGHT | a partire da 600 gr |



| |
|-----------|
| 0BC4FAL |
| 0BC4FAL25 |
| 0BC4FAL30 |

UPON REQUEST, IT IS POSSIBLE
TO PAIR THESE BLADES WITH
WHITE COLOR 400 FOOTPOCKETS







UP

MADE IN ITALY

Umberto Pelizzari



**WATCH THE
VIDEO OF THE
PRODUCT
BEEN TESTED
IN THE WATER**



The creation of the UP fins is the result of the collaboration between C4 and Umberto Pelizzari. These fins feature the new 250 footpockets and thermoplastic blades.

MATERIALS

The design and material of the blade are key features to obtain both softness, high elastic return and strong resistance to breaking. C4 has selected and tested many different polymers, selecting two blends, one for the Soft version and one for the Medium stiffness blades. These two solutions guarantee extremely high performance and resistance.



100% MADE IN ITALY

All C4 carbon fiber blades have always been entirely manufactured in our production plant in Italy. Starting this year, a new plastic injection department has been added at C4 plant and this is where the 250 footpockets and UP blades are manufactured.



NEW

FOOT POCKET 250

Thanks to the use of a TPE 75 ShA polymer overmolded on a rigid sole, the 250 foot pocket transmits energy from the foot to the blade in the best possible way, resulting in highly efficient fins.

The design of the geometries has allowed to use minimum thicknesses resulting in a reduction of the weight of the 250 footpocket in size 41/42 to just 250gr.

PERFORMANCE

The connection between the foot pocket and the blade, thanks to the internal sole, is rigid and solid, and transmits the force to the blades efficiently.

The assembly of the blade on the footpocket without side horns, already created by C4 in 2006, allows an elastic bending of the blade along its entire length.

MATERIAL

The polymer used for the 250 foot pocket is particularly elastic and allows for an easy and simple fit, thus improving comfort. The insole allows to have a stiff footpocket in the sole area but comfortable in the upper.

TRANSPORTATION

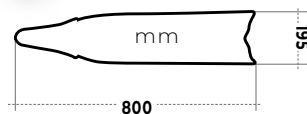
The 250 footpocket features a simple assembly of the blade thanks to a single sturdy M6 screw. The assembly and disassembly of the blade is quick and simple and the overall dimensions are optimal in case of air travel.

INTEGRATED WATER RAILS

A key element feature by the C4 Umberto Pelizzari fins is the fact that the water rails are over-moulded on the blades. The length (30.2* cm), the variable height (max 17.8* mm), the thickness (3.3* mm) and the material (thermo rubber) are another important feature of these blades.

LOW WEIGHT

Today the C4 Umberto Pelizzari fins are by far the lightest on the market of long polymer blade fins. They weigh less than 1200 grams a pair.



| | 0PC4UP |
|--------|---------------|
| MEDIUM | 0PC4UPM 36-44 |
| SOFT | 0PC4UPS 36-44 |

UPON REQUEST, IT IS POSSIBLE TO PAIR THESE BLADES WITH WHITE COLOR 250 FOOTPOCKETS

250



| | |
|----------------|-------------------------------------|
| MATERIAL | Thermoplastic |
| BLADE HARDNESS | SOFT - MEDIUM |
| WATER RAILS | CO-MOULDED IN ELASTIC THERMOPLASTIC |
| FINS WEIGHT | Starting from 670 g |



PREDATOR

MADE IN ITALY



Manufactured entirely at C4 plant in Italy, Predator fins are made by overmolding a technopolymer blade with 250 foot pockets. These fins are ideal not only for diving novices but also for more experienced spearfishermen and freedivers who want a light fin with a comfortable foot pocket, a soft but reactive blade, and who do not consider it essential to have a fin with a blade that can be disassembled from the foot pocket.

FOOTPOCKETS 250

PREDATOR fins are equipped with the new 250 footpockets. Thanks to the use of a TPE 75 ShA polymer, the energy transmission of the 250 footpocket to the blade is increased, thus obtaining highly efficient fins.

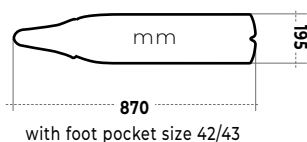
The study of the geometries has allowed us to obtain minimum thicknesses, allowing the weight of the 250 footpocket in size 41/42 to be reduced to just 250 grams.



| | |
|---------------------|------------------------------------|
| BLADE MATERIAL | TECHNOPOLYMER |
| FOOTPOCKET MATERIAL | TPE 75 SHA |
| BLADE HARDNESS | SOFT |
| WATER RAILS | YES |
| FIN WEIGHT | 630 GR WITH FOOT POCKET SIZE 42/43 |

BLADE PREDATOR

We have sourced and tested a specific polymer to obtain a soft blade with high elastic return and strong resistance to breakage. The presence of water rails in the final part of the blade prevents the fin from drifting during the kick, thus improving performance.



OPC4250PRE
OPC4250PRE 36-46

100% MADE IN ITALY

All C4 carbon fiber blades have always been entirely manufactured in our production plant in Italy. Starting this year, a new plastic injection department has been added at C4 plant and this is where the 250 footpockets and PREDATOR blades are manufactured.



EU

36/37

38/39

40/41

41/42

42/43

43/44

44/45

46/47



US

4/4.5

5.5/6

7/8

8/9

8.5/9.5

9.5/10.5

11/12

12.5/13



Manufactured entirely at C4 plant in Italy, STORM fins are made by over-molding a technopolymer blade with 250 footpockets.

These fins are ideal not only for diving novices but also for experienced spearos and freedivers who spearfish in shallow waters (0-18mt)

Storm fins feature a comfortable foot pocket, a soft and reactive blade but 10 cm shorter than the standard length featured on spearfishing fins.

FOOTPOCKETS 250

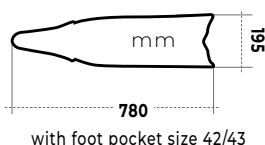
STORM fins are equipped with the new 250 footpockets.

Thanks to the use of a TPE 75 ShA polymer, the energy transmission of the 250 footpocket to the blade is increased, thus obtaining highly efficient fins.

The study of the geometries has allowed us to obtain minimum thicknesses, allowing the weight of the 250 liner in size 41/42 to be reduced to just 250 grams.

NEW

| | |
|---------------------|------------------------------------|
| BLADE MATERIAL | TECHNOPOLYMER |
| FOOTPOCKET MATERIAL | TPE 75 SHA |
| BLADE HARDNESS | SOFT |
| WATER RAILS | YES |
| FIN WEIGHT | 590 GR WITH FOOT POCKET SIZE 42/43 |



with foot pocket size 42/43



FIN BLADE

We have sourced and tested a specific polymer to obtain a soft blade with high elastic return and strong resistance to breakage. The presence of water rails in the final part of the blade prevents the fin from drifting during the kick, thus improving performance.



EU

36/37
38/39
40/41
41/42
42/43
43/44
44/45
46/47



US

4/4.5
5.5/6
7/8
8/9
8.5/9.5
9.5/10.5
11/12
12.5/13

100% MADE IN ITALY

All C4 carbon fiber blades have always been entirely manufactured in our production plant in Italy. Starting this year, a new plastic injection department has been added at C4 plant and this is where the 250 footpockets and STORM blades are manufactured.

ENG



**BAGS +
BACKPACKS**

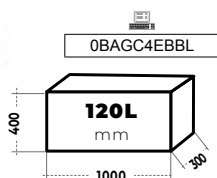
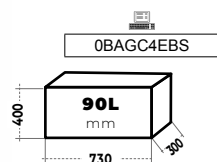


BAG EXTREME

90 L E 120 L

Bags Extreme 90L and 120L are made with high resistance HF welded Tarpaulin and they are designed specifically to carry diving equipment:

- 90L or 120L internal bag.
- Double slider zipper with an additional elastic safety system
- External pocket for accessories with zipper and cover.
- Double handle for transportation
- Adjustable central handle
- Water draining valve
- Side pocket with a roll out feet pad.



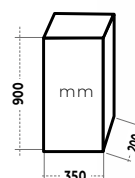
| | |
|-------------------|-------------------------------------|
| MATERIAL | High resistance HF welded Tarpaulin |
| DIMENSIONS | 90L and 120L |

BACKPACK EXTREME 60 L



| | |
|-------------------|-------------------------------------|
| MATERIAL | High resistance HF welded Tarpaulin |
| DIMENSIONS | 60 L |

0BAGC4EBBP



HOOKS
TO CARRY
SPEARGUNS



CAN
FIT
FINS

EXTREME 60L is a backpack made with high resistance HF welded Tarpaulin and it is designed specifically to carry diving equipment. The elastic bands featured on the side are designed for the transportation of spearguns.

- Waterproof.
- 60L internal bag.
- Adjustable shoulder straps.
- Elastic bands on the side designed specifically to carry spearguns.



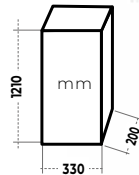
TOP VOLARE FIN BAG

TOP VOLARE is a bag/backpack which has been designed large enough to carry every model of plastic and carbon fiber fins available on the market. More diving equipment, such as wetsuits, masks and snorkels can be fitted inside this bag.

- Internal neoprene pocket to protect the edges of carbon fiber fins.
- Large external pocket to carry accessories.
- Double slider zipper.
- Adjustable shoulder straps.

0BAGC4FBVO

| | |
|-------------------|-------------------------------------|
| MATERIAL | High resistance HF welded Tarpaulin |
| DIMENSIONS | 47" X 13" X 8" |



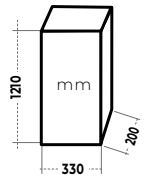
INTERNAL
NEOPRENE
POCKET



FIN BAG VOLARE SPEARFISHING

TOP FIN VOLARE SPEARFISHING is a bag/backpack which has been designed large enough to transport every model of plastic and carbon fiber fins available on the market. More diving equipment, such as wetsuits, masks and snorkels can be fitted inside this bag.

- Internal neoprene pocket to protect the edges of carbon fiber fins.
- Large external pocket to carry accessories.
- Double slider zipper.
- Adjustable shoulder straps.
- Elastic bands on the side designed to carry spearguns



0BAGC4FBVOS

| | |
|-------------------|-------------------------------------|
| MATERIAL | High resistance HF welded Tarpaulin |
| DIMENSIONS | 47" X 13" X 8" |

HOOKS
TO CARRY
SPEARGUNS



INTERNAL
NEOPRENE
POCKET

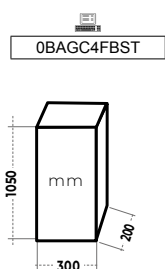


STANDARD FIN BAG

Fins bag featuring an adjustable shoulder strap and an external pocket to carry accessories.

- Double slider zipper.
- Adjustable shoulder straps

| | |
|-------------------|------------------------|
| MATERIAL | Water resistant Nylon. |
| DIMENSIONS | 41" X 12" X 8" |



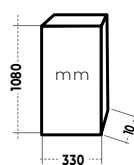
0BAGC4FBST



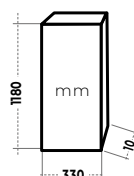
FINS BAG BASIC

Fins bag featuring an adjustable shoulder strap. It is available in two lengths.

| | |
|-------------------|---|
| MATERIAL | Water resistant nonwoven material. |
| DIMENSIONS | LENGHT 43" and 51" WIDTH 13" DEPTH 0.4" |



0BAGC4FBB



0BAGC4FBBL



SPEARGUN BAGS

GLADIUS

GLADIUS is a bag designed specifically to carry spearguns and it features four separate compartments.

- 4 Compartments with a double slider zipper.
- Adjustable shoulder straps.

0BAGC4GBDE



| | |
|------------|-------------------------------------|
| MATERIAL | High resistance HF welded Tarpaulin |
| DIMENSIONS | 67" X 12" X 8" |

STANDARD

STANDARD is a bag designed specifically to carry spearguns and it features a reinforcement on the bottom.

- Long double slider zipper.
- Adjustable shoulder and hand straps.

0BAGC4GBS



| | |
|------------|-------------------------------------|
| MATERIAL | High resistance HF welded Tarpaulin |
| DIMENSIONS | 67" X 11" X 8" |

SINGLE

Padded bag specifically designed to carry a single speargun.

- Large opening on the side with a single slider zipper..
- Adjustable shoulder straps.

0BAGC4TR150
0BAGC4TR170



| | |
|------------|------------------------------------|
| MATERIAL | Water resistant nonwoven material. |
| DIMENSIONS | length 59" width 6"- 8" |



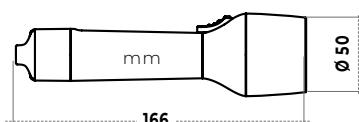


ACCESSORIES

ORION



0LIGHTC40R



New generation flashlight manufactured in anodised Anticorodal 6061 Aluminum and designed for spearfishing and freediving. Thanks to its advanced technical features, it can be used in all sorts of diving activities.

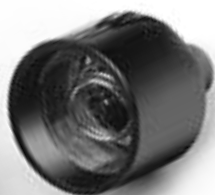
ORION features a Led charge indicator. It is red when the USB cable is inserted and the battery is charging. The same Led turns green when the battery is fully charged. This Led is visible when the bottom of the flashlight is unscrewed and the flashlight is in charging mode.

This flashlight also features a second Led which indicates the charge status of the battery during use. This led is visible through the transparent flashlight bottom part. The led turns on when the flashlight is turned on. It has a fixed green light when the battery is charged and it starts blinking when the battery is almost out of power.

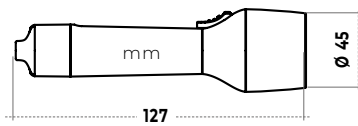
ORION comes with a Type C / Type C charging cable and the charging time, with a 5V 3.0A charger, is 1h50min.

It also comes with an adapter which transforms the Type C / Type C cable into a Type C / USB cable to be used with the less powerful but more popular 5V 1.5A charger. In this case, the charging times is longer: 4h20min

| | |
|--|--|
| POWER | 30,000 LUX |
| LUMEN | 420LM |
| WEIGHT | 320g |
| BATTERY | 18650 Li-ion 2600mah 3.7V |
| RUN TIME | 1h 15m |
| LED | Cree XPL |
| CHARGE TYPE | Type C (high speed charger) |
| DIA. LIGHT BEAM | 80MM |
| CHARGING TIME WITH CHARGER 5V 3.0A CAVO Type C/Type C | 1h |
| CHARGING TIME WITH CHARGER 5V 1.5A E CAVO Type C/Type C+ adaptor USB | 3h |
| CHARGING TIME WITH CHARGER 5V 2.1A E CAVO Type C/Type C+ adaptor USB | 1h30min |
| CHARGE INDICATOR | Two Leds: Red in charge - Green Charged |
| CHARGE INDICATOR DURING USE | One green Led: On charged Blinking not charged |

HAND LACE,
USB CABLE AND
ADAPTORRED LED
DURING
CHARGEGREEN LED
CHARGED

LUXO



0LIGHTC4ALGR

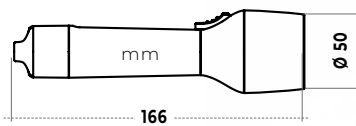
LUXO is a Led diving flashlight manufactured in Anticorodal 6061 featuring small dimensions and a light beam of 20.000 lux. The sliding switch is magnetic and it is easy to operate.



HAND LACE

| | |
|-----------|--------------------|
| POWER | 20,000 LUX |
| WEIGHT | 160g |
| BATTERY | 3xAAA4.5V Alkaline |
| RUN TIME | 50Min |
| LED | Cree |
| MAX DEPTH | 100MT |

DRACO



0LIGHTC4DRA

New generation flashlight manufactured in anodised Anticorodal 6061 Aluminum and designed for spearfishing and freediving. Thanks to its advanced technical features, it can be used in all sorts of diving activities.

DRACO features a Led charge indicator. It is red when the USB cable is inserted and the battery is charging. The same Led turns green when the battery is fully charged. This Led is only visible when the bottom of the flashlight is unscrewed and the flashlight is in charging mode.

It comes with an USB charging cable and the charging time, with a standard 5V 1.5A charger, is 4h20min.



HAND LACE

| | |
|--------------------------------------|---|
| POWER | 20,000 LUX |
| LUMEN | 350LM |
| WEIGHT | 290g |
| BATTERY | 1865 Li-ion 1800mah 3.7V |
| RUN TIME | 1h 10m |
| LED | Cree XPG |
| CHARGE TYPE | Mini USB |
| DIA. LIGHT BEAM | 120MM |
| CHARGING TIME WITH CABLE 5V 1.5A USB | 4h20min |
| CHARGE INDICATOR | Due Led: Rosso in carica - Verde Carico |
| CHARGE INDICATOR DURING USE | no |

RED LED DURING CHARGE





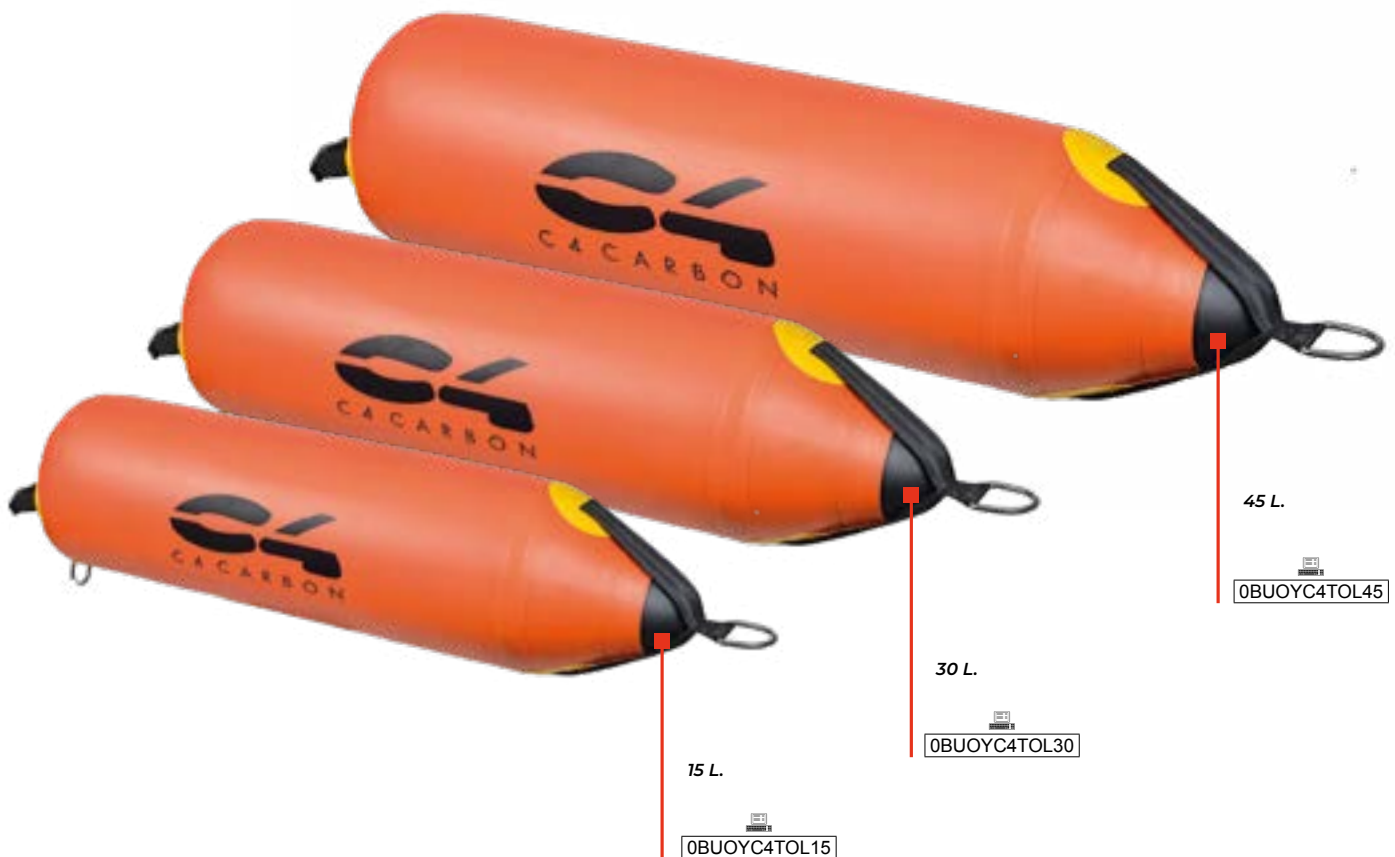
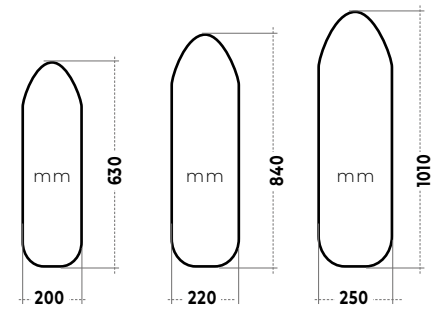
BUOYS TORPEDO

The construction of the TORPEDO buoys and their oversized valve allow the buoy to be inflated up to a pressure of 29 PSI bar (2 bar) making it ideal for blue water hunt-ing.

The torpedo buoys are made with 0.7mm PVC and feature two handles on the sides, a handle on the back, 2 stainless steel D-rings and a swivelling carabiner.

The buoys, when deflated, can be rolled up with a very small volume. The buoys are supplied with an inflation adapter for a standard bicycle pump.

The buoys are available in three sizes: 15L, 30L, 45L.



FLOAT **OPEN SEA 29**

OPEN SEA 29 is manufactured in high resistance PVC material by "drop stitch" technology. The construction and the high capacity valve allow this board to be inflated at 29PSI (2 bar) making it ideal for blue water fishing. When the buoy is deflated it can be rolled and stowed away in a very small space.

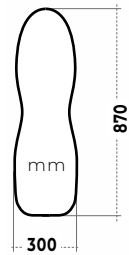
OPEN SEA 29 features 6 stainless steel D-rings on the bottom and 6 on the sides. The 6 D-rings on the sides feature elastics to carry spearguns. Handles are featured on the top and on the sides.

On the bottom there is a pocket that can be used to insert a 1Kg weight to better stabilise the float.

OPEN SEA 29 is supplied with a high visibility 30x30cm flag and a 90cm long flag pole.

A pump, a bag and a repair kit are also supplied together with the float.

Size 87cm x 30cm x 15cm
90cm flag pole and 30x30cm flags
12 stainless steel D-Rings
3 handles



0BUOYC4OS29



STANDARD
SET UP



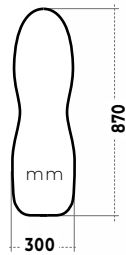
FLOAT **OPEN SEA 15**

OPEN SEA 15 is the simpler version of float OPEN SEA 29, but it is manufactured with the same materials and technology.

The float is very resistant and can be inflated to a pressure of 15PSI (1bar). OPEN SEA, when deflated, it can be rolled and stowed away in a very small space.

It features 6 stainless steel D-rings on the bottom and 2 on the sides
OPEN SEA 15 is supplied with a high visibility 30x30cm flag and a 90cm long flag pole

Dimensions 87cm x 30cm x 15cm
90cm flag pole and 30x30cm flags
8 stainless steel D-Rings



 0BUOYC40S15



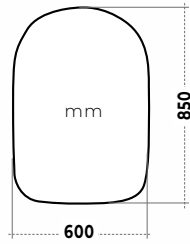
BOARD **CRUISER**

The board CRUISER is made by "drop stitch" technology, the same manufacturing process used to make inflatable surfing boards and SUPs. Thanks to this technology, great buoyancy and sturdiness can be achieved with a limited volume. CRUISER is manufactured in high resistance PVC with an anti-skid EVA pad on the top part and a quick inflation/deflation valve. When not inflated, it can be rolled for transportation.

The board features 9 stainless steel D-rings and 4 rubber bands for transportation of spearguns and accessories. It also features an elastic system in the top front for transportation of accessories.

CRUISER comes with a high visibility 12"x12" flag, a backpack, a pump, and a repair kit.

Dimensions 34" x 24" x 4"



FLOAT **RED DRAGON**

Red Dragon is manufactured in TPU coated NYLON 420D by high frequency welding. The size of this buoy is 90x35cm.

On the bottom part there are two pockets containing two 100g lead weights to stabilise the buoy during use.

Five TPU D-rings are also positioned on the bottom part and they are connected by an elastic string.

On the top part, RED DRAGON, features a 20x25x5cm pocket with a velcro closure to carry objects and a TPU hard handle.

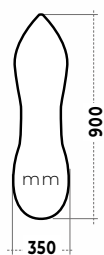
The flag is the same one featured on the OPEN SEA buoy models.

Size 90cm x 35cm

90cm flag pole and 30x30cm flag.

5 TPU D-Rings and a large pocket.

1 handle



0BUOYC4RD





KNIFE RONIN

Ronin is a knife with an innovative design conceived and designed specifically for spearfishing.

The handle is over moulded to the metal body of the knife. At the base of the handle, there is a high-powered whistle that is very useful in case of emergency situations.

The 81mm blade, manufactured in 420B stainless steel, is partially protected by a black PVD which increases its resistance to corrosion.

Ronin features a razor grind and a tooth with a specific design for cutting lines. The blade has a central retaining tooth hook that works both for hooking and unhooking, exploiting the elastic memory of the sheath.

The sheath is made of thermoplastic material with high mechanical resistance and low humidity absorption. It has two double holes for attachment to the belt with a partial opening that allows it to be moved on the belt without having to remove the weights.

Due to the type of steel used it is always advisable to rinse it with fresh water and dry it after each use.

Available in black, red and white colors.



0KNIVESC4ROW

WHITE



0KNIVESC4ROR

RED



0KNIVESC4RON

BLACK

KNIFE **VIKING**

VIKING is a knife featuring innovative characteristics and design.

The handle is made of thermoplastic material, co-molded with the metal body of the knife. At the base of the handle, there is a high-power whistle which can be very useful in case of emergency.

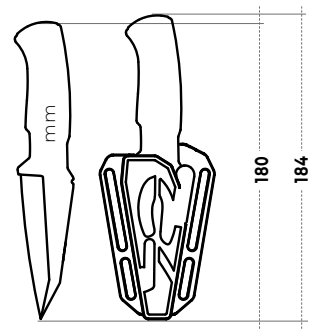
The 88mm blade, made in AISI304 stainless steel, features a razor grind, a specifically designed toothing for cutting the lines and a window for disengaging the shafts.

The blade has a central retaining tooth coupling that works, both during in-section and extraction, thanks to the the elastic memory of the sheath.

The sheath is made of thermoplastic material with high mechanical re-sistance and low water absorption. It has two double holes for attaching it to the belt.

The knife is also supplied with two rubber straps.

0KNIVESC4WVI



TWO RUBBER
STRAPS WITH
STAINLESS STEEL
BUCKLES FOR ARM
AND LEG.





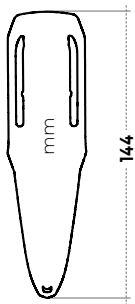
KNIVES **NAIFU**

NAIFU and NAIFU S feature an innovative and ergonomic design. NAIFU is a belt knife with a total length of 204mm and a blade length of 94mm. NAIFU S is a smaller knife, designed to be carried on the arm, with a total length of 144mm and a blade length of 66.5mm. The handle and the sheath are manufactured in recyclable POM material. This is a very sturdy and auto lubricating material with excellent mechanical properties and low water absorption. NAIFU has a locking system between

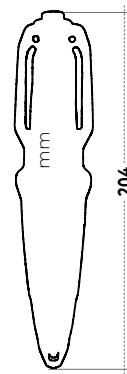
the knife and the sheath which makes it for an easy extraction and insertion. The blade of NAIFU S is inserted all the way in the handle making it extremely sturdy. NAIFU's blade features a shaft remover and comes out from the bottom of the blade so that it can be used as a light hammer. A very important feature on the NAIFU knives is that the blade is machined to create a razor cutting edge whose geometry greatly increases its cutting and penetrating effect.

Both knives are delivered with two rubber straps with stainless steel buckles for use on the arms or legs. NAIFU sheath also features two holes on the bottom so that an additional elastic can be used to hold the knife in position.

0KNIVESC4NAS
NAIFU S



0KNIVESC4NA
NAIFU



TWO RUBBER STRAPS
WITH STAINLESS STEEL
BUCKLES FOR ARM AND
LEG.



KNIVES **NAIFU WHITE**

NAIFU and NAIFU S WHITE feature a white teflon coated blade. This particular finish makes the blade more resistant to wear and reduces friction to cutting. The blade is also easier to clean and to sanificate.

The handle is made in white thermoplastic and in combination with the white blade it makes the knife extremely visible in case of loss on the bottom of the sea.

Blade protection

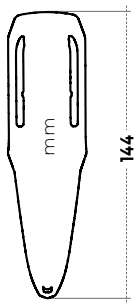
Two rubber straps with stainless steel buckles for arm and leg.

TWO RUBBER STRAPS
WITH STAINLESS STEEL
BUCKLES FOR ARM AND
LEG.



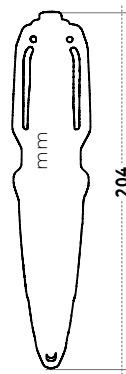
0KNIVESC4NASW

**NAIFU S
WHITE**



0KNIVESC4NAW

**NAIFU
WHITE**



PROTECTION OF THE BLADE FROM OXIDATION



PLASTIC MARSEILLE BUCKLE BELT

This belt is identical to the Stainless Steel Marseille Buckle belt but it features a thermoplastic buckle produced in POM plastic. Thanks to the use of this specific technical plastic material, the belt is lighter but still very resistant. The belt is available in the following colours: black, white, brown and silver.

| |
|---------------|
| 0BELTC4MANYN |
| 0BELTC4MANYW |
| 0BELTC4MANYBR |

| | |
|--------------------|--|
| MATERIAL | Silicone |
| DIMENSIONS | LENGHT: 1.45 m HEIGHT: 50 mm THICKNESS: 4.0 mm |
| MAX STRETCH | 670% |
| TEMPERATURE | -70°C to +200°C |



STAINLESS STEEL MARSEILLE BUCKLE BELT

Silicone made belt featuring a quick release Marseillaise style stainless steel buckle. This belt is much more advanced than all other traditional natural rubber made diving belts. The silicone used is extremely elastic and very resistant to salt water and sunlight. The belt is available in the following colours: black, white, brown and silver.

| | |
|--------------------|--|
| MATERIAL | Silicone |
| DIMENSIONS | LENGHT: 1.45 m HEIGHT: 50 mm THICKNESS: 5.0 mm |
| MAX STRETCH | 570% |
| TEMPERATURE | -70°C to +200°C |

| |
|---------------|
| 0BELTC4MAINN |
| 0BELTC4MAINW |
| 0BELTC4MAINBR |



PLASTIC STANDARD **BUCKLE BELT**

Silicone made belt featuring a standard Nylon buckle. This belt is much more advanced than all other traditional natural rubber made diving belts. The silicone used is extremely elastic and very resistant to salt water and sunlight. The belt is available in the following colours: black, white, brown and silver.

| |
|-------------|
| 0BELTC4NYN |
| 0BELTC4NYW |
| 0BELTC4NYBR |

| | |
|--------------------|--|
| MATERIAL | Silicone |
| DIMENSIONS | LENGHT: 1.40 m HEIGHT: 50 mm THICKNESS: 3.0 mm |
| MAX STRETCH | 770% |
| TEMPERATURE | -70°C to +200°C |



BLACK



BROWN



WHITE

1KG **BELT WEIGHT**

Belt weight made in painted lead in the following colors: matt black and silver. Also available in the quick release version in black color. The design is highly hydrodynamic and the dimensions are 85x58x30mm.



| |
|-----------|
| 0LC41000 |
| 0LC41000S |

QUICK
RELEASE
VERSION

BLACK



SILVER

NEOPRENE **BEANIE**

Neoprene beanie made in 3mm double lined highly stretchable neoprene.



0HATC4001



ENG



2024

ENG



C4
accessories

MB CONCEPT & DESIGN

Marco Borchini

Marco Bardi and the accessories

From the very first experiences, I felt the need to pay the utmost attention to my equipment, with an obsessive relationship that allowed me to always feel safe when spearfishing.

I have pushed myself in search of new solutions, to increase the pleasure of spearfishing. Many accessories that I have created have become an added value that has allowed me to combine comfort and efficiency.



Marco Bardi

You can tell the level of a spearfisherman also by the details of his equipment





The design of this new accessories line is something I really care a lot about. It was possible to realize it only with the people who have always believed in me, allowing me to study, select, test and create each product.

For this reason, I have chosen to work with C4. In this company, I have found the will to carry out a reliable and constant project over time, based on the common passion for this sport.

The accessories line, which bears my name, is a constantly evolving project. Our goal is in fact to improve and make even more comfortable the small equipment that we consider fundamental for the success of day out spearfishing.

Marco Borchi'



**scan the code with your smartphone
to find information sheets
and video tutorials**

Ergonomic fin insoles

C4 insoles have been designed specifically for diving. The design and materials used are specific for the use in diving fin shoes.

The insoles adapt perfectly to all C4 fin pockets but they can also be used with many of the other foot pockets on the market.

C4 insoles allows the use of fin pockets of a larger size with neoprene socks in a different thick-ness.

Thanks to their anatomical shape, C4 insoles increase the comfort inside the fin shoe pockets which, having the same shape for the right and left foot, feature many empty spaces.

The reduction of space also minimises the flow of cold water inside the shoe thus keeping the foot warmer in the winter and reducing the risk of cramps.





The insoles greatly improve the planar shape of the shoes under the foot arch, eliminating the void and thus increasing the control of kicking and optimising the propulsive force.



C4 insoles are available in 3 sizes that can be used in footpockets from size 38 to 45, thanks to the possibility of being cut to size on pre-existing cutting lines.



Marco Bardi

Once you try them once, it's guaranteed you will never go fishing without them



| |
|-----------|
| 0AC4ERF38 |
| 0AC4ERF41 |
| 0AC4ERF44 |



EU

38/41

41/43

44/47

US

6/8.5

8.5/10

10/13

Belt fish holder kit

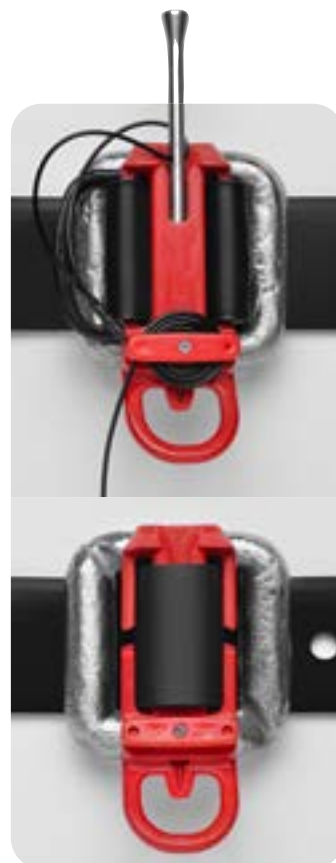
This belt fish holder can be used both on the right and on the left and can be placed on the belt without removing the weights.

0ACMB003

Liquids lost by the fish on the belt attract other nearby fish.

Allows you to quickly store away the fish allowing you to start quickly to a new action.

Putting a few fish on the belt helps camouflage the diver and intrigue other fish.



Marco Bardi

Without the fish holder on my belt it is as if I am missing something essential and this is the best I have ever used

Polyethylene Gloves Dyn

These gloves are made in high modulus thermoplastic polyethylene.

The material has anti-slip properties allowing the diver to grab fish and other objects in complete safety.

They are ideal during the summer or in warmer waters and the thermoplastic polyethylene material guarantees excellent hand sensitivity thanks to its softness.



| |
|-----------|
| 0GLC4DYS |
| 0GLC4DYM |
| 0GLC4DYL |
| 0GLC4DYXL |

Made with waterproof fabric featuring a certified level 5 anti-cut resistance.

DYN gloves are available in 4 sizes: S, M, L and XL.



Marco Bardi

When you wear these gloves you feel safer and more effective

MADE IN ITALY

Swimming Shorts

Swimming shorts with a modern cut, designed and produced in Italy just for C4 with an exclusive carbon effect texture.



Marco Bardi

There are generic swimming shorts and special swimming shorts, the difference is in the satisfaction when wearing it.

With a comfortable carrying bag



Supplied with a carbon key ring that enriches its aesthetics.

Dries quickly



0ABBC4CS S-XXL



**SIZE
CHART**



2mm superstretch undersuits

Preshaped neoprene undersuit made in single lined 2mm neoprene with a highly stretchable lining on the inside and smooth skin neoprene on the outside. Available in two versions: basic and with hood.



Marco Bardi

A neoprene wetsuit with an excellent price quality ratio

This undersuit improves the diver thermal protection in between seasons, when wearing a thicker wetsuit is not yet a necessity, without compromising his comfort.

BASIC

The model without hood is the most used in spearfishing because it facilitates the freedom of dressing and wearing under the wetsuit.

0UC4S02S-2/6

It can be wore under any wetsuit, including single lined wetsuits.

HOODED VERSION

The hooded version can also be used in watersports where protection is needed - freedom of movement, such as freediving training in the pool and swimming in the sea.

0ACMB004S-2/6

Prodotto realizzato con neoprene super elastico liscio all'esterno e con fodera scorrevole all'interno.

The undersuit is longer on the pelvis for a higher thermal protection which makes it easier to wear.

It comes in 4 sizes from 2 to 5.

MADE IN ITALY

Extreme Antifog

The ideal product to be applied on the glass lenses of diving masks which have been previously treated with the ABSOLUTE CLEANER and on the polycarbonate lenses of swimming goggles.



Marco Bardi

You will never spit again on your mask lenses

| |
|----------|
| 0KC4A |
| 0KC4A050 |

Available in containers with sprayers in size 50ml and 250ml .

50 ml



MADE IN ITALY

Absolute Cleaner

The first degreasing products on the market specifically designed for diving masks, new and used, which prevents fogging problems and no side effects.

250 ml



Available in containers with sprayers in size 50ml and 250ml .

50 ml



| |
|----------|
| 0KC4C |
| 0KC4C050 |
| 0KC4C250 |



Marco Bardi

After using it once, fogging has been just an old memory



MADE IN ITALY

0KC4GL001

Neoprene Glue

Liquid black glue for the repair of all neoprene equipment. 30 gram tube with spout that facilitates application.



It guarantees high resistance in all types of bonding.

30 g.



Made in Italy under European regulations.



Marco Bardi

This is the best glue I've ever used."

MADE IN ITALY

Cyano Acrylate Glue

Glue featuring a fast and strong adhesive power. 20 gram tube with a safety cap that allows it to be used for a long time without the risk of the glue degrading.

0ACMB005

20 g.



Ideal for quick bonding of almost all types of materials.

Made in Italy under European regulations.

It comes with detailed instructions with a tutorial video.



Marco Bardi

Excellent easy to use glue

MADE IN ITALY

300+400 Fin Guides Repair Kit

Repair kit specifically designed to substitute broken fin rails on all C4 carbon fiber blades featured on 300 and 400 fins.



Marco Bardi

Substituting the rails is really easy with this kit

The kit features two thermoplastic rails and a 2g cyanoacrylate glue specific for bonding plastic and carbon fiber.



0KC4RP01

An instruction manual and a tutorial video are easily accessible through a QR code featured on the package.

MADE IN ITALY

Water Rail Constant

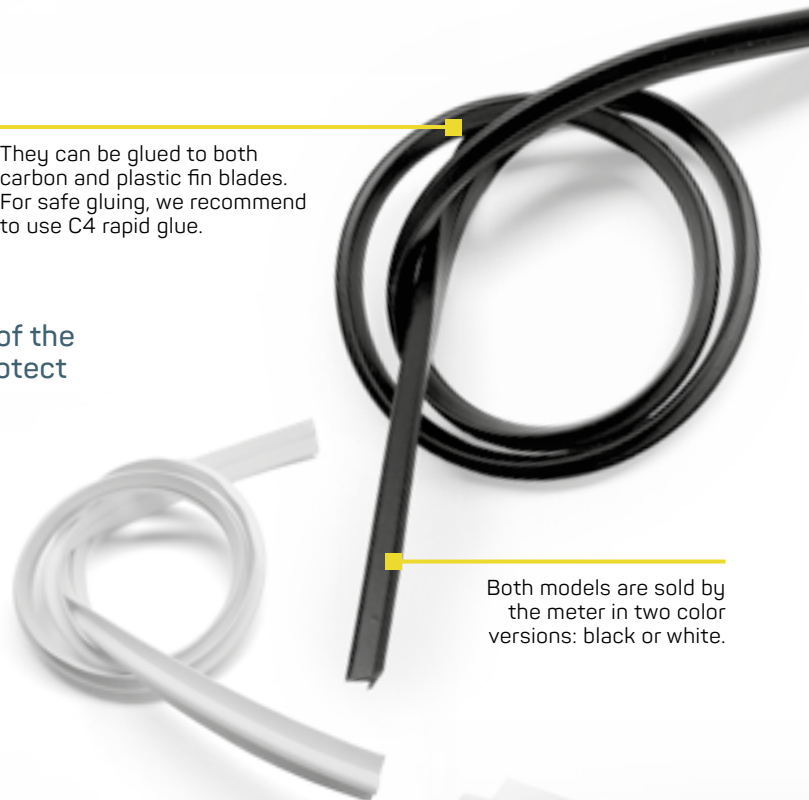
Water rails are profiles to be applied to the sides of the blades to channel the water, stabilise the kick, protect against impacts and avoid noise.



Marco Bardi

There is no comparison in using fins with or without these profiles: the difference is huge.

They can be glued to both carbon and plastic fin blades. For safe gluing, we recommend to use C4 rapid glue.



Both models are sold by the meter in two color versions: black or white.

The "U" water rail has a lower and more curved profile that captures less water but has less dispersion, so the blade is more manageable.

The "T" water rail has a taller profile that channels more water, so the blade becomes stiffer and more powerful.

Professional Line Winder

High capacity floating line winder.

Specific eyelets to block the line to size, both on the diver's side and on the buoy side.

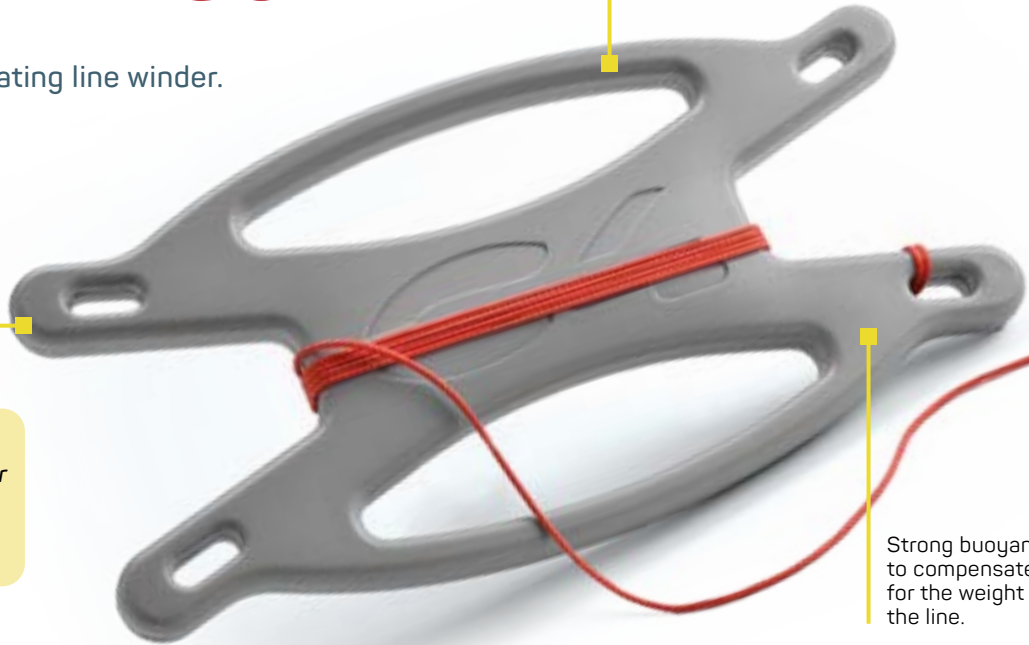
Double side handle to facilitate the rewinding of the line.

0ACMB001



Marco Bardi

I use this line winder when I need a thick line to rewind and calibrate quickly



Strong buoyancy to compensate for the weight of the line.

Elastic Bungee

This elastic bungee facilitates the insertion of the line into the speargun mechanism even while wearing gloves.

Marco Bardi

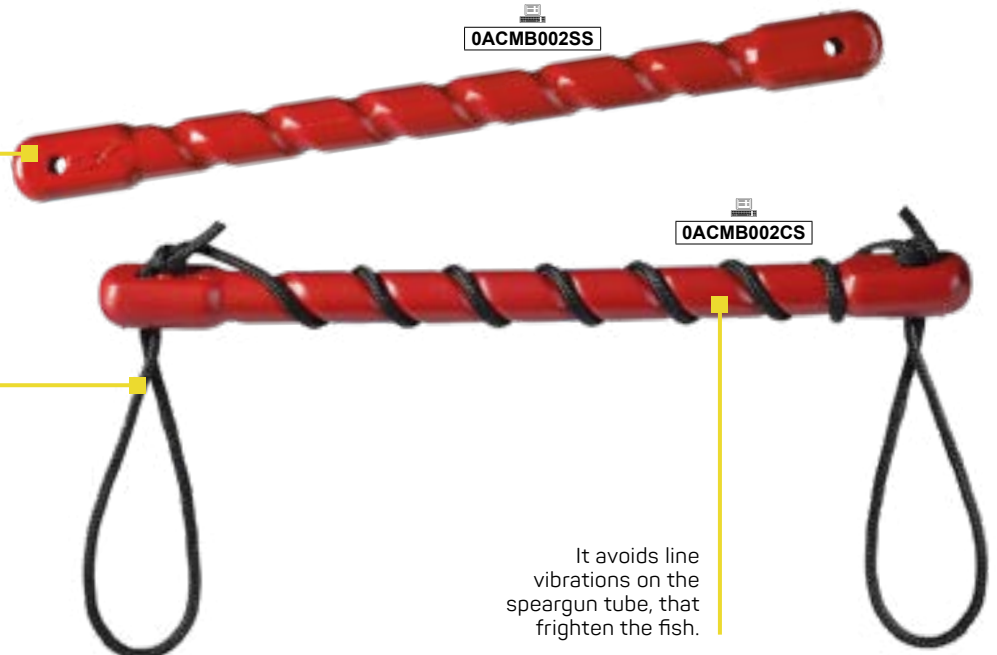
It is an indispensable accessory for the correct setup of every speargun

0ACMB002SS

It reduces the stroke end of the shot reducing the wear of the monofilament on the shaft.

It reduces the jerks of the caught fish - limiting the risk of losing it.

0ACMB002CS



It avoids line vibrations on the speargun tube, that frighten the fish.

Quick Release Weight

1Kg quick release weight, to quickly change the floatability in the water or to be positioned on the bottom, attached to the buoy's line.

Features a D-Ring for quick attachment of a carabiner and line.

Easy to insert and remove from any weight belt.


0LC42000

Black anti-glare and impact resistant plastic protection.



Marco Bardi

I have always said that any spearfisherman should have at least one or two quick-release easy to use weights on the belt

Lead Ankle Weight

Anatomic 500g ankle lead weight ideal for balancing the flotation of the legs.



Marco Bardi

They are more hydrodynamic - they do not clutter - they have no edges


0KC4ALW

It features two holes on each side to allow better fixing.

Painted with a soft protective paint.



Weight Backpack with fringes

Camouflage neoprene weight backpack,
simple and effective that can carry from
2 to 6 kg

Comfortable to wear,
quick to release

The dynamic fringe
system improves
camouflage

0ACMB027



Marco Bardi

*This neoprene backpack
features a modern and
effective design*

Adjustable and elastic
system.

Weight Backpack12Kg

Modular ballast system that allows you to use from 2
to 12 kg.

It can contain from 2 to 12
kg of weight distributed over
a large area of the body

It is worn
comfortably
and it dries quickly
after use.

The weights can be
removed and inserted
while spearfishing.

0ACMB025



Marco Bardi

*The best system for those who need a lot
of weight or for those who have to vary the
ballast often*

Lumbar protection

Rigid POM plastic plate - to be applied in the weight belt

0ACMB022

Protects the lumbar area from the load of the ballast



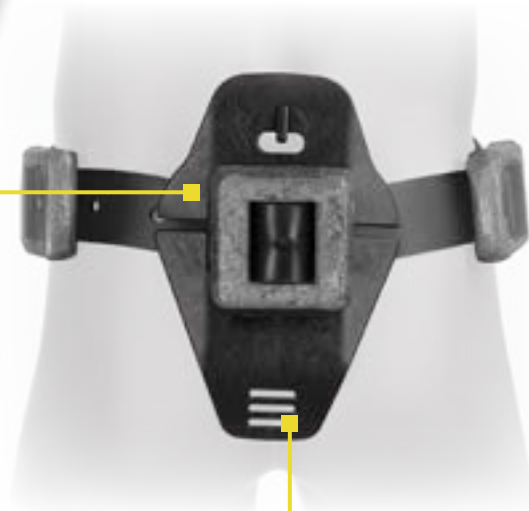
It keeps the belt firmer both horizontally and vertically.

It allows the body to limit the warping effect that brings the torso and legs up, thus improving the technique.



Marco Bardi

Three important advantages in an easy and comfortable to use accessory



Crotch belt

Anchoring system for weight belts and backpacks.



Maximum comfort under the crotch thanks to the elastic silicone band.

Easy to hook and secure in case of an automatic release

Adjustable system that allows both the belt and the backrest not to move in any direction.



SOLUTION 1 HOOK ABOVE THE EDGE OF THE BELT

SOLUTION 2 HOOK ABOVE THE PIN OF THE BUCKLE

0ACMB029



Marco Bardi

It's really comfortable to have the belt and the backrest always fixed in the position I prefer



Universal camouflaged neoprene mask cover

This universal mask cover helps to dynamically camouflage the head and face of the diver, and reduces the risk of water infiltrating the mask.

They camouflage the most protruding parts of the face.

NEW

The camouflage fringes move like seaweed above your head.



Marco Bardi

"I recommend it in shallow and medium waters, because you only need to use it once to see how the fish approach you much easier"

0CFMC4001

The elastic support base under the nose helps seal one of the main points of entry of water into the mask.



Floating Sunglasses

C4 sunglasses have been specifically designed for the use at sea.



Marco Bardi

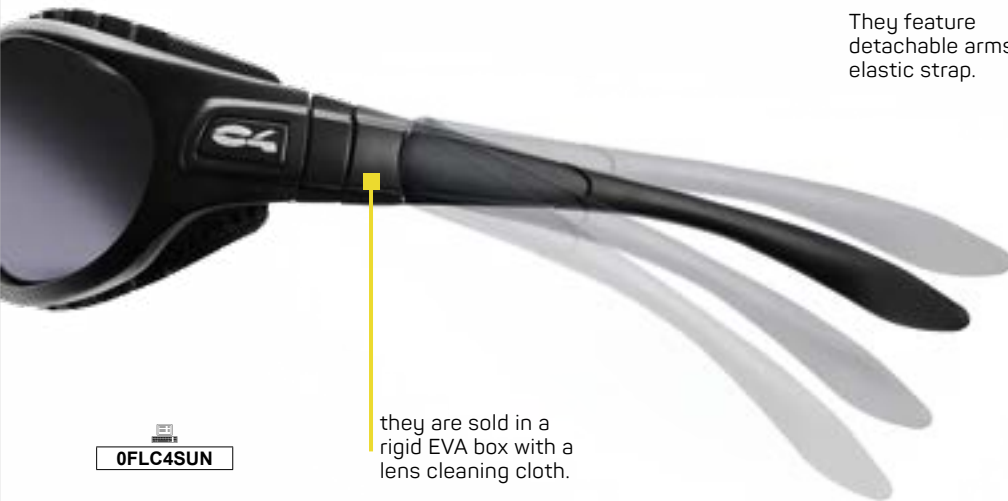
They won't make you catch more fish but they will surely make you look cool

On the inside of the frame they feature a sponge, made of floating and water-repellent material, that allows them to be easily recovered on the surface, in case of an accidental drop in the water.

The glasses have polarized mirrored lenses ideal for the use on a boat.



They feature detachable arms and an elastic strap.



they are sold in a rigid EVA box with a lens cleaning cloth.



0FLC4SUN



Coated Pvc

Waterproof Bags

Sturdy watertight bags for storing and keeping clothes and gear dry. Featured in two sizes. The 10 Lt bag is ideal for carrying documents and small items. The 45 Lt bag is ideal for clothes and bigger equipment.



Easy to wash and dry them thanks to the specific handle on the bottom to store it upside down.

0BAGC4ST45

Waterproof closures that make them watertight and floating, even in case of an accidental fall into the sea.

0BAGC4ST10



Made with high resistance coated PVC they are



Easy to carry and to store.



Marco Bardi

To me, dry bags are an indispensable accessory."



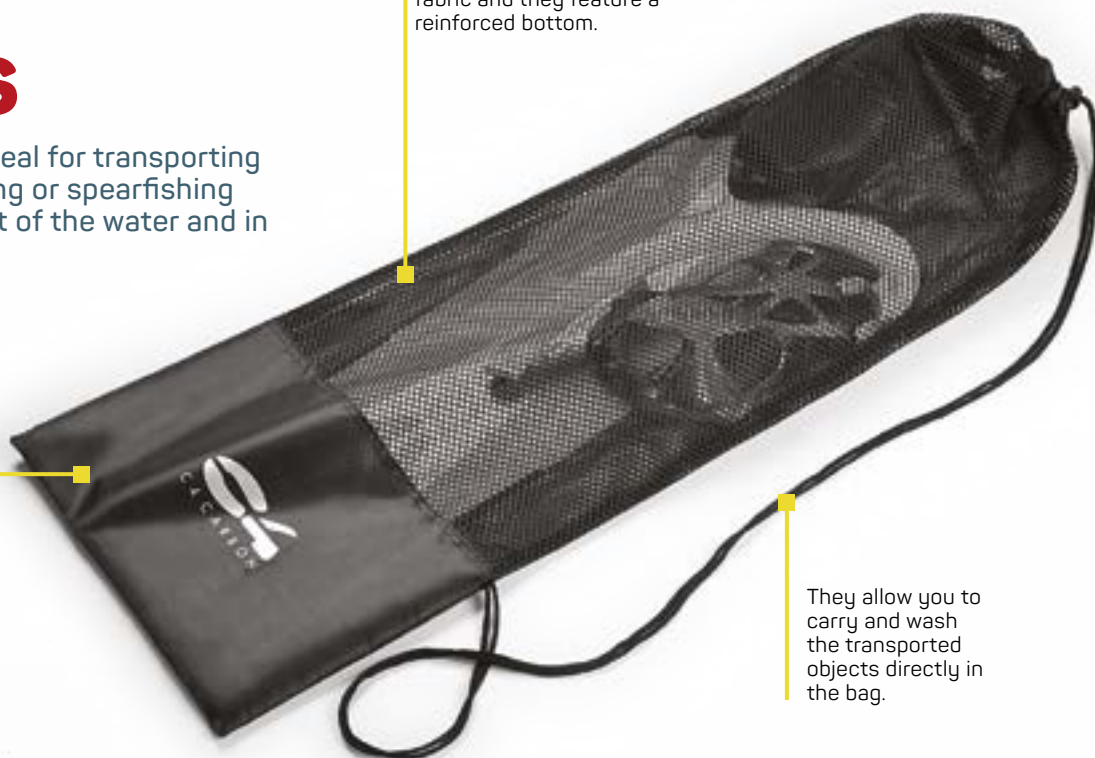
Mesh bags

C4 Mesh bags are ideal for transporting freediving, snorkelling or spearfishing equipment, both out of the water and in the water.

They can be transported attached to the buoy to carry fish and difficult-to-place objects.

They are made with tear-resistant perforated fabric and they feature a reinforced bottom.

They allow you to carry and wash the transported objects directly in the bag.



NEW



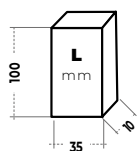
NEW



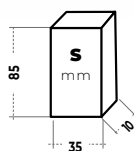
Marco Bardi

"The need for use occurs more often than one might imagine for many purposes. I find them comfortable and useful".

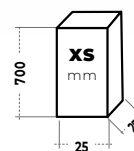
NEW



0MEGRC4L



0MEGRC4S



0BAGC4NY



Universal Bracket for camera

Made in stainless steel. Can be assembled on all C4 slides.

Sturdy and stable

Easy to apply and remove



Marco Bardi

Reliable system to enhance underwater shots with Cam on the speargun

Gladius & Mr Carbon slide

Specific slide for Gladius and Mr Carbon 2 spearguns for quick coupling with the Universal bracket.

0ACMB030

Locking safety system

Quick and safe assembly on C4 spearguns - but it can also be adapted to other spearguns by means of two simple screws.

Quick coupling and release thanks to the Universal bracket.

Absence of movement and vibration for clean shots



Marco Bardi

Slide and bracket are made in the typical C4 style of quality and precision

Carbon keychain

Lightweight and robust

Original key rings cut from a 100% carbon fiber plate, for those who like to identify themselves.

C4 exclusive design

Ideal for true carbon fiber lovers



Marco Bardi

I see it as a hallmark. Every sport or discipline has some dedicated object and I think we must have it too

0ACC000001

0ACC000002

Mask Box

Protective container for masks, rigid and light, made of thermoformed polyethylene coupled with polyester fabric.



Marco Bardi

In your bag, this box will do a great job in protecting your mask



0MAC4BOX



The internal fabric protects the mask from scratches and bumps.



The container features a zipper and can be very useful to carry other objects such as: video cameras, diving computers and car keys.

Swimming Cap

Freediving and swimming cap made in high quality anallergic silicone in a variable thickness.



Marco Bardi

The greater thickness of the this cap does not compromise its comfort thanks to the highest quality silicone used to manufacture it

Extremely soft and comfortable, it features a special carbon fiber finish and an ergonomic shape.



0SC4SSC001

SoftFlask



The flask has been designed to be carried on a diving buoy allowing the diver to stay hydrated during the time out at sea.

0KC4CWB

500MI soft flask made in TPU with a silicone mouth piece featuring a nylon lanyard for easy carrying.



It is floatable and it can be operated with just one hand.



Marco Bardi

The most comfortable water bottle I have ever used at sea

Pants Neoprene valve "liquidout"

Valve to be applied to the wetsuit pants to urinate freely during spearfishing without having to take your wetsuit pants down.



Marco Bardi

"It may seem uncomfortable even from an aesthetic point of view, but you just need to use it once to understand how useful it is and to never do without it again"



Greater thermal stability without any liquids in the suit.

Improved personal hygiene.

Convenience of execution.

0ACMB031

Neoprene Car Seat Cover

Water repellent protective cover for car seats made of 3mm Nylon double lined neoprene.



Thanks to this accessory, the diver can drive between diving sites wearing a wetsuit with-out the risk of getting the car seats wet or dirty.



Marco Bardi

In my car, there are always two car seat covers

0KC4NCS

Pom Carabiner

Standard shape carabiner made in highly resistant Nylon.



Marco Bardi

I believe that carabiners are extremely useful accessories - and this one is the one I use most

Light and ease of use.

It does not produce unwanted noise or light reflections.



BREAKING FORCE 60 kg. !!

0ACMB006

Exclusive design specific for spearfishing.



Swivelling Pom Carabiner

Nylon carabiner featuring a double eyelet that rotates 360°. Ideal for connecting two lines, even different ones, and avoiding the classic line twisting.

It is light and does not cause the line to sink.

It allows you to always have the line stretched out in a linear way without it rolling up on it-self.

Ideal for carrying objects that can get twisted together on the buoy.



Marco Bardi

I hate the line and objects that twist around themselves and, thanks to this carabiner the problem is solved

0ACMB007

Elastic armband

Safe and comfortable system to carry the knife or reel on the arm.

Convenience of positioning and adjustment.

Stability that improves use.

Remarkable durability over time.



0ACMB028



Marco Bardi

I use it above all for the knife and the reel on the arm and it is a very valid solution

Line Floater

Specific float for lines of all kinds used in spearfishing.



Marco Bardi

After using it for the first time, you'll regret not having done it before! It's very comfortable

0ACMB008

It allows the line to remain vertical above the scuba diver, limiting its intrigue in the roughness of the seabed.

It makes it easier to locate the exact point on the seabed where the line is positioned.

You can quickly adjust the size as needed.



Elastic Lines For Buoys

Special line that stretches effortlessly up to 3 times its original size. Available in 3 sizes: 4m, 8m and 12m.

It allows to always keep the buoy above the vertical of the diver.

In the event of a current, it reduces the voltage on the buoy and facilitates its transport.



Marco Bardi

The elastic line is simply indispensable

0ACMB009
0ACMB010
0ACMB011

It reduces the traction of the waves and the wind on the buoy and reduces the risk of losing it.



Crimping Plier

This plier has been specifically designed and manufactured by C4 for the crimping of single or double sleeves in the most commonly used sizes in spearfishing.

0TOC4CRI



The holes featured on the head of the plier have diameters: 2.2mm, 3.0mm e 4.0mm.

The plier features a hot tempered steel head and metal sheet handles.

The closure of the jaws has a minimum tolerance, allowing for a precise crimping of the sleeves on nylon monofilament and other types of lines in the most commonly used diameters.



Marco Bardi

Once you realise the importance of a line with sleeves well crimped, you just can't go without it anymore.

Sleeves For Line Crimping

Crimp sleeves, ideal for monofilaments and rigid lines. Made of burnished metal.



Marco Bardi

Line crimping is a fundamental operation in spearfishing. When you have specific accessories available, it becomes a pleasure to do it

0ACMB012

Excellent seal with a minimum volume.

Easy to use, they simplify all crimping operations.

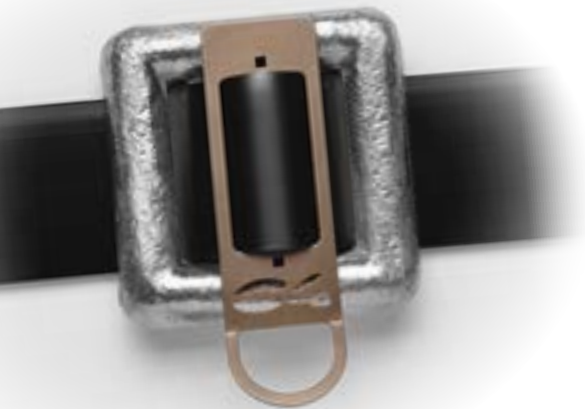
Specific for underwater fishing.





Stainless Steel D-Ring

D-ring made in stainless steel to facilitate the attachment of a carabiner or other accessories on the belt.

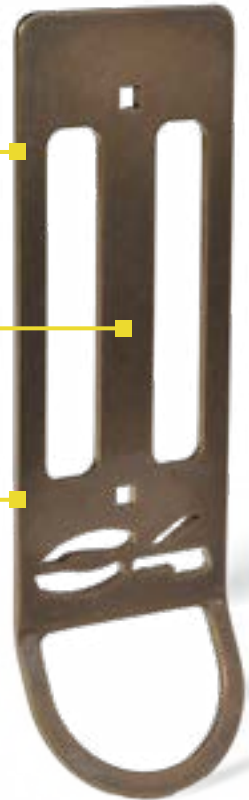


0KC4DR01

It can resist strong pulls - such as the ballast retrieval from the seabed.

Made in Italy with high quality stainless steel.

It completes the weight belt, with a very sturdy attachment point.



Marco Bardi

I have never used such a reliable D-Ring

Shaft Tip protection

Plastic protection for the tip of shafts.



Marco Bardi

"It will be appreciated by those looking for the simplest, most comfortable and safest solution"



Easy to spot thanks to the bright color.

Features holes for a lanyard - to hang or pull.

Very safe, even in case of strong pressure on the tip.



0ACMB021

O-Rings for shaft barbs

O-RINGS have the purpose of keeping the shaft barb in position. The movement of the barb can interfere in the shooting phase, or cause noise that can scare the fish. To meet the various needs - 3 models with different features have been developed.



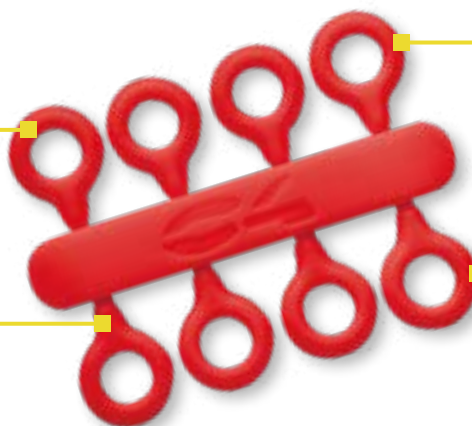
Marco Bardi

"Having the correct type of O-Ring for shaft barbs that best meets our needs gives a certain satisfaction. With this assortment of O-Rings, the era of adapted and uncomfortable O-Rings is over."

Red O-ring 60 Shore

Easy to spot on the surface, thanks to the red color that goes darker in depth.

It is easy to grab even with gloves thanks to a small protrusion.



The 60 shA hardness allows this O-Ring to be sufficiently elastic for any type of shaft but, at the same time, to have greater resistance over time.

It is therefore suitable for those who prefer the balance between practicality, elasticity and resistance.



0ACMB015

Black O-ring 50 Shore

Made with a hardness of 50 shA, it is more elastic than the red model but slightly less resistant to cuts and tears.



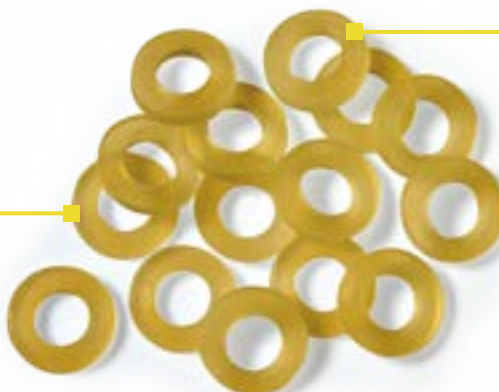
It is easy to grasp, even with gloves, thanks to the small protrusion, it is suitable for those who prefer elasticity and comfort over greater resistance.



0ACMB014

Pure latex O-Ring

The pure latex O-Ring is the most elastic model. It is less bulky because it has a reduced thickness and it has no protrusion.



The major advantage of this O-ring is that it allows for a cleaner line of sight but is slightly less comfortable in its use.



0ACMB016



scan the code with
your smartphone to
find information sheets
and video tutorials



C4 Srl
Via Cesare Battisti, 40
20847 Albiatè (MB) ITALY
Ph. +39.0362.1573081
infosales@c4carboni.com
C4CARBON.COM